



T. LOCKMAN LLC

High Design Products for Home & Life

2011 CATALOG

C o n t a c t

RETAIL ORDER CONTACT INFORMATION:

404-748-1031

FAX: 866-406-7416

WHOLESALE & FOR-THE-TRADE CONTACT INFORMATION:

404-748-1018

FAX: 866-406-7416

Hours of operation:
Monday through Friday.
9am -5pm EST.

OFFICE & WAREHOUSE ADDRESS:

1854 Marietta Blvd., NW
Atlanta, GA 30318

T. LOCKMAN LLC

History

- E s t . 2 0 0 3 -

T.Lockman LLC has a long history of providing high design, luxury home furnishings, and fashion accessories. Opening in High Point, North Carolina in 2003, T.Lockman LLC focuses on bringing the highest quality home and life accessories from classic, old-world manufacturers. Best known for clean design, sophistication, utilization of the best materials, neoclassical styling, and refined craftsmanship. With several lines of wool, cashmere, and leather goods, T.Lockman has defined itself as a leader in home and life wares.



6



8



74



164



172



174



248



284



306



350



360



378



86



136



186



216



314



338



394

T. LOCKMAN LLC

400

BOOK ONE:
Handbags & Accessories
 Tampico 8
 Les Touristes 74
 Pasion Argentina 86
 Baobab 136
 Definition of Terms 160
 Care Instructions 161
 Handbag Color Index 162

BOOK TWO:
Purchasing Information
 Retail Guidelines 166
 To-the-Trade Guidelines 168
 Wholesale Guidelines 170

BOOK THREE:
Throws
 Classic Solids 174
 Classic Tartans & Patterns 186
 Nina Campbell for Johnstons .. 216
 Contemporary 248
 Cottage 284
 Crofting Collection 306
 Modern 314
 Patchwork & Collage 338
 American Yacht 350
 Baby & Infant Blankets 360
 Peruvian Throws 378
 Definition of Terms 390
 Care Instructions 391
 Throws Color Index 392

BOOK FOUR:
Gifts
 Cashmere Comfort Set 396
 Origanimals 398

T. LOCKMAN LLC

BOOK ONE:

Handbags & Accessories

Tampico Collection 8

Les Touristes Collection 74

Pasion Argentina Collection 86

Baobab Collection 136

Definition of Terms 160

Care Instructions 161

Handbag Color Index 162

BOOK ONE

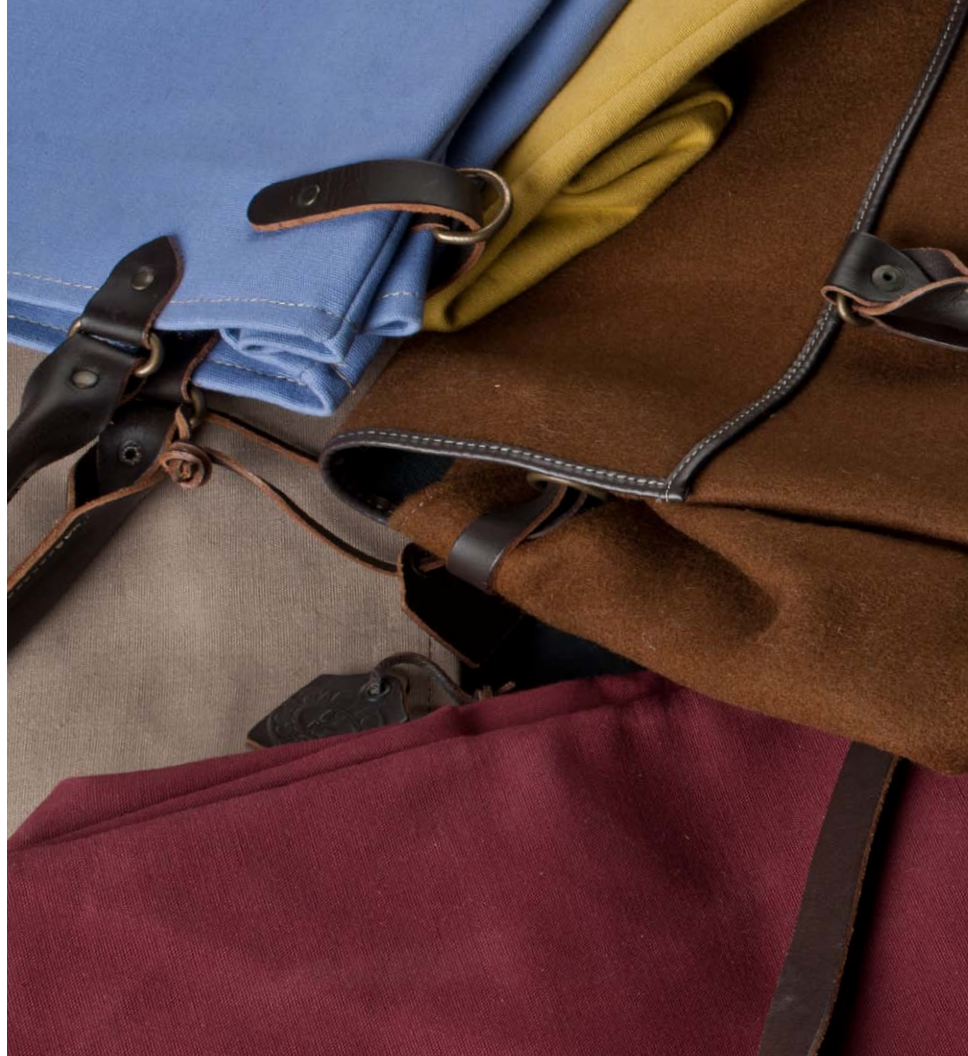
T. LOCKMAN LLC

Handbags & Accessories



www.tlockman.com • 404-748-1018

Crafted from high-quality leathers and textiles milled in the South of France, the Tampico collection offers a masculine silhouette with the beauty and practicality of every woman's favorite handbag. Made primarily of cotton canvas, these bags fold flat making them perfect for travel. With an array of bold colors achieved using vegetable dyes and leather that only softens with age, this collection illustrates a successful combination of elegance and timeless simplicity.



A collection of leather and canvas accessories is displayed on a dark background. The items include several dark brown leather straps with white stitching, some featuring brass buckles. There are also pieces of canvas fabric in olive green and maroon, some with metal grommets. A black folding knife is visible on the right side. A central white box with a black border contains the text: T. LOCKMAN LLC, Tampico Collection, - France -.

T. LOCKMAN LLC
Tampico
Collection
- France -



BRONZE

Zan Pirate Zip

6204

Weather-treated canvas with leather handle and accents.

Handle drop 5".

24.5" W @ mouth x 10.5"W @

base x 12.5" H.

Made in France.



SLATE GRIS



Cabas Pirate

6203

Weather-treated canvas with
leather handle and accents.

Handle drop 6". Inside pocket
9.5" x 7.5".

17" W x 5" D x 11" H

Made in France



SLATE GRIS



www.tlockman.com • 404-748-1018



OLIVE

INCA

KOALA

NAVY

Officer Weekend Wool Bag

1606

Wool with leather handle and accents.

Fold over closure with snap.

Handle drop 8". Inside pocket 10" x 6".

16.5" W x 5.5" D x 12" H.

Made in France



KOALA

Vagabond Bag

4266

Wool with leather accents.
Leather bottom & leather zip
closure.

Handle drop 8".

18" W x 5" D x 16" H

Made in France

GREY
BROWN





NAVY

GREY BROWN

NAVY



Le Charlie Bag
4256

Boiled wool with leather accents.
2 detachable wool-backed leather
straps 25" x 2.5".
External snap pocket/open pocket
combo 8" W x 6" H.
Bottom 10.5" dia. x 12" H .
Made in France.

OLIVE



OLIVE

www.fox.com • 404-748-1000

Besace Leather

Messenger

4751

Leather

Fold over closure.

Adjustable canvas strap.

Inside pocket 10.5" W x 6.5" H.

17" W x 7" D x 13" H.

Made in France.



GREY

BROWN



BROWN



GREY

TAUPE



TAUPE

www.tlockman.com • 404-748-1018

Adventure Supple

4747

Leather with leather straps.
Magnet closure. Inside pocket:
8" H x 5" W.
Handle drop 10".
W @ top 21" x W @ base 11" x
H 12".
Made in France



TAUPE



BLACK DADDY CROCO

**Recycled Tall Cabas
Business Totes
3306**
Hard pressed recycled leather
Handle drop 6.25".
11.25" W x 4.5" D x 16.25" H.
Made in France



BROWN DADDY CROCO



BLACK DADDY CROCO



BLACK SCOUBIDOU



BLACK DADDY
CROCO

404 748 1018



BLACK DADDY CROCO



BROWN
DADDY
CROCO



BLACK
DADDY
CROCO

Recycled Wide Cabas

354

Hard pressed recycled leather.

Handle drop 8" .

16.25" W x 4.5" D x 11.25" H.

Made in France



BROWN
DADDY
CROCO



MIDNIGHT

**Paolo Bag
5019**

Polytrill / synthetic fibers
Dual zipper closure. Interior
pocket.

Handle drop 7". Long strap 16".
18" W x 9" D x 15" H.
Made in France



MIDNIGHT



MIDNIGHT

Palace Large

4776.L

100% Cotton canvas with leather accents.
Snap closure, expansion tabs @ sides. External pocket.
Handle drop 6". Long strap 13.5".

16" W x 10.5" D x 17" H.

Made in France

* Full color spectrum next page

P A L A C E



SAND



E L A R G E

in 12 colors



TERRA COTTA

CURRY

SAND

CIEL / CLOUD BLUE



SAFARI

KIWI

JUNGLE

MARGAUX



TAUPE

GALET / STONE

ARDOISE

VIOLET



Palace Small

4776.S

100% Cotton canvas
Snap closure, expansion tabs @
sides. External pocket.

Handle drop 8".

14" W x 7.5" D x 14" H.

Made in France

** Full color spectrum next page*



GLYCINE



GLYCINE



CIEL / CLOUD BLUE

BLEU PETROL

GLYCINE / PERIWINKLE

FUSCHIA



CORAL

SAFARI

KIWI

CURRY

WEEKEND

www.tlockman.com • 404-748-1018



SAFARI

ER



Dark
Brown

Charcoal

Jungle

Safari

Black

Weekender Linen, XL
1037.XL

Linen, recycled leather bottom.
zip closure. Internal pocket.
Handle drop 4". Long Strap 20".
17.5" W x 9.5" D x 20" H .
Made in France



**Linen Weekender, Large
1037.LG**

Linen w/ Recycled leather
bottom.

Zip closure. Internal open
pocket.

Handle drop 6.5".

L @ top 24" x L @ base 16" x W

@ base 19.5".

Made in France.

NATURAL





LIGHT GREY

BOHEME

Boheme Linen Bag

3229

Linen with leather accents and zip closure. Internal pocket.

Handle Drop 11".

17" W x 6" D x 18.5" H.

Made in France.



LIGHT GREY

DARK GREY

NATURAL

SUNSBAG

www.tlockman.com • 404-748-1018



CIEL / CLOUD BLUE



Sunset, Flat Handle

4029

100% Cotton canvas

Snap closure.

Removable zip pocket/purse:

9" x 6.5".

Handle 3" drop. Strap 20" long.

18" W x 10"D x 10" H.

Made in France.

* Full color spectrum next page

CIEL / CLOUD BLUE

REMOVABLE
ZIP POCKET



CIEL / CLOUD BLUE



BLACK

MARINE

CIEL / CLOUD BLUE

TAUPE



CURRY

VIOLET

FUSCHIA

Sunset, Round Handle

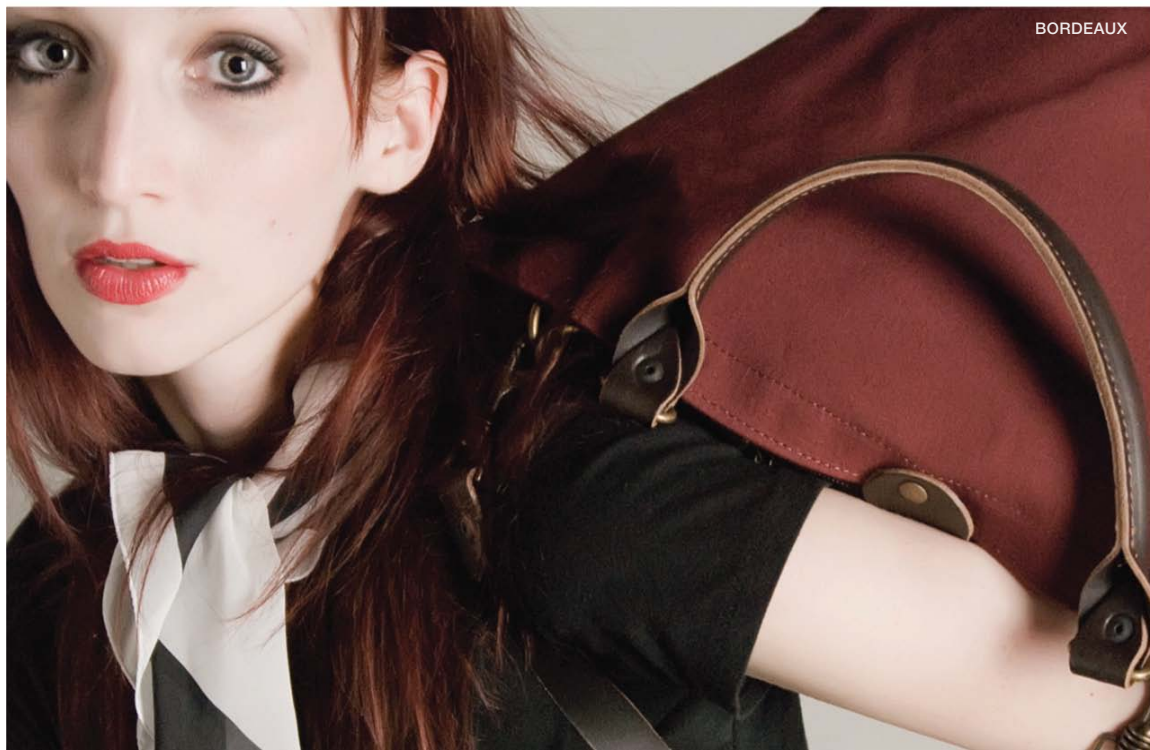
4028

100% Cotton canvas, leather accents with a snap closure.
Removable zip pocket / purse
9" W x 6.5" H.
Handle 3" drop. Strap 20" long.
18" W x 10" D x 10" H.
Made in France

** Full color spectrum next page*



BORDEAUX



BORDEAUX

www.tlockman.com • 404-748-1018



BORDEAUX

TAUPE



CURRY



KIWI



CAMEL

ESPRESSO
BROWN

GRIS



GRIS

CITY BAG



GRIS

City Bag
4750
Leather w/ zipper closure.
Adjustable canvas strap.
Inside pocket.
5.5" W x 5.5" D x 13.5" H.
Made in France.

www.tlockman.com • 404-748-1018



BLEU PETROL



CURRY

Traffic Bag

4001

100% Cotton canvas, leather accents and a snap closure.

Inside pocket.

Handle drop 6".

17" W x 6.25" D x 12" H.

Made in France.

* Full color spectrum next page



TERRA COTTA

CURRY

BLEU PETROL

TERRA COTTA

ARDOISE / GREY

BORDEAUX





MARINE

VIOLET

BROWN

JUNGLE

**Traffic Bag
4001**

100% Cotton canvas and leather accents with snap closure.
Inside pocket.
Handle drop 6".
17" W x 6.25" D x 12" H.
Made in France



BLEU PETROL

COFFEE
www.tlockman.com • 404-748-1018

Cape Cod, Small
4011.S

100% Cotton canvas, leather accents snap closure, expansion tabs @ sides. Inside pocket w/ key fob.

Handle drop 7".

14" W x 5.5" D x 12" H.

Made in France

FUSCHIA







CURRY

VIOLET

GLYCINE / PERIWINKLE

CIEL / CLOUD BLUE

FUSCHIA

Cape Cod, Small

4011.S

100% Cotton canvas, leather accents snap closure & expansion tabs.

Inside pocket w/ key fob.

Handle drop 7".

14" W x 5.5" D x 12" H.

Made in France

FUSCHIA

SAFARI

www.tloockman.com • 404-748-1018



SAFARI

Cape Cod, XL

4011.XL

100% Cotton canvas

Snap closure, side expansion
tabs. Inside pocket w/ key fob.

Handle drop 8.5".

17" W x 6.25" D x 12" H.

Made in France

** Full color spectrum next page*



SAFARI

SAFARI



GALET / STONE



TAUPE



BORDEAUX



ARDOISE



GRIS / SLATE
(WEATHER TREATED)





PEWTER

West Bag

4044

100% Cotton canvas, leather accents with zip closure. Zippered side pocket on each end.

Handle drop 8.75".

L @ top 20" x L @ base 11" x

W @ top 6" x W @ base 10" x

H 11.75".

Made in France



PEWTER



JUNGLE

Sam Bag

4016

100% Cotton canvas with leather accents and zip closure. Handle drop 4". Strap 21" long.

5" W x 6" D x 15" H.

Made in France



SAFARI

BLACK



JUNGLE



ARDOISE / GREY



JUNGLE



LG

TAUPE, XL

Voyager Bag, XL
4160.XL

Suede with leather accents,
Zip closure. Internal open
pocket.

Handle drop 9".

16.25" W x 6"D x 13.75" H.

Made in France



TAUPE, XL



ARDOISE / GREY, XL

ARDOISE / GREY, XL



TAUPE, LG

Voyager Bag, Large

4160.LG

Suede with leather accents.
Zip closure. Internal open
pocket.

Handle drop 9" .
18" W x 6" D x 8" H.

Made in France



Porte Document Bag

4233

Suede with leather accents.
zip closure.

Handle drop 3".

14.5" W x 2.25" D x 10.25" H.

Made in France

BROWN



TAUPE



OLIVE



BROWN



BROWN



OLIVE



TAUPE

**Clutch
4162**

Suede, leather, zip closure
leather ties as handle, 10 in long.
2 external pockets (1 per side).
11.75" W x 1.5" D x 7" H.
Made in France

This collection of vibrant bags and totes is made using natural materials. Crafted from patterned cotton canvas designed in Paris, this line of bags includes an assortment of utilitarian shapes, colors, and sizes. Their lightweight and flexible nature allows them to be easily folded flat for storage, yet they are durable enough for everyday use.





T. LOCKMAN LLC
Les Touristes
collection
- France -



6
p o c k e t
C I T Y
B A G

6 Pocket City Bag

City6.ORG

100% Cotton canvas w/ zipper and snap closures. 2 External pockets. 2 Internal pockets.

Handle drop 7".

17.5" W x 6" D x 12" H.

Made in France



the playful essence
of spring



ORCHID PRINT



ORCHID PRINT

Overnight Bag

OVRNT. ORC

100% Cotton canvas, zipper
closure

handle drop 8". 2 Internal
pockets.

12" W x 5.5" D x 16.5" H.

Made in France

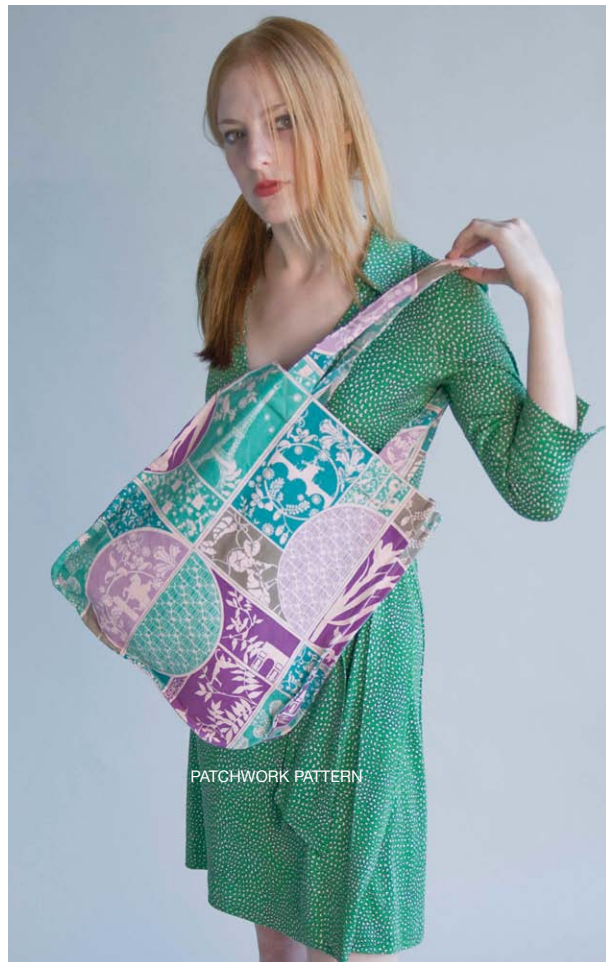


PATCHWORK PATTERN



TEAL PARIS PATTERN

Magazine Bag
MAG.
100% Cotton. Internal zip
pocket. Handle drop 8".
12" W x 5.5" D x 16.5" H.
Made in France



PATCHWORK PATTERN

Cosmetics Bags

COSM.

100% Cotton fully lined
w/ zip closure. 2 Interior
pockets.

11.75" W x 3.5" D x 8.5" H

Made in France

C O S M E T I C S



NOUVEAU MORNING

MORRIS FIELD

NOUVEAU DARK

TEAL PARIS



NOUVEAU MORNING



NOUVEAU DARK



MORRIS FIELD



TEAL PARIS

Large Zippered Pocket

Zip.Lg.TP

100% Cotton, zips across length
of top, fully lined.

12" W x 8.75"H

Made in France



TEAL PARIS

Small Zippered Pocket

Zip.Lg.ET

100% Cotton, zips across length
of top, fully lined.

8.2" W x 6" H

Made in France



TEAL EIFFEL TOWERS



BLUE DOTS

Girl Tote
GIRL.DOT
100% Cotton, fully lined.
Handle drop 8".
11.75"W x 13.3"H.
Made in France



BLUE DOTS



PINK ORCHID

Girl Tote
G/RL.ORG
100% Cotton, fully lined.
Handle drop 8".
11.75"W x 13.3"H.
Made in France



Made in Argentina, this collection of bohemian-style leather and suede handbags are simple and sensible. They are crafted for us by a Fair Trade company in Buenos Aires providing them a hint of South American flair. Each bag is equipped with a mobile phone slot, pocket, and key fob, and comes come in a variety of bright, vibrant colors achieved using eco-friendly vegetable dyes.





T. LOCKMAN LLC
P á s i ó n
A r g e n t i n a
C o l l e c t i o n
- A r g e n t i n a -



DISTRESSED BROWN



DISTRESSED BROWN

DISTRESSED BLACK

Distressed Leather Campesino Bag
Arg. Camp.DL

Leather, fully lined inside, fold over closure with magnetic snap.
Internal pocket, cell slot, w/ key fob
Handle drop 19".
14" W x 2" D x 17" H.
Made in Argentina

Campesino Bag

Arg. Camp. Sd

Suede lined inside | fold over
closure with magnetic snap.
Internal pocket, cell slot w/
key fob

Handle drop 19"

14"H x 2" x 17"

Made in Argentina



VIOLET

ORANGE



VIOLET



BLACK



BLACK



BLACK

Olympia Leather, Large
Arg.Oly.L.Lg
Napa Leather
Internal zip pocket, Phone slot,
w/ key fob
Handle drop 8.5".
12" W x 6" D x 14" H.
Made in Argentina



BLACK

www.tloekman.com • 404-748-1018



WHITE, LG



WHITE, LG



WHITE, SM

Olympia Leather, Large
Arg.Oly.L.Lg
Napa Leather
Internal zip pocket, phone slot,
w/ key fob.
Handle drop 8.5".
12" W x 6" D x 14" H
Made in Argentina

Olympia Leather, Small
Arg.Oly.L.Sm
Napa Leather
Internal zip pocket, phone slot,
w/ key fob.
Handle drop 8".
9" W x 7.5" D x 9" H
Made in Argentina



WHITE, LG



Olympia Leather, Small

Arg.Oly.L.Sm

Napa Leather

Internal zip pocket, phone slot,
w/ key fob.

Handle drop 8".

9" W x 7.5" D x 9" H

Made in Argentina

Olympia Leather, Large

Arg.Oly.L.Lg

Napa Leather

Internal zip pocket, phone slot,
w/ key fob.

Handle drop 8.5".

12" W x 6" D x 14" H

Made in Argentina



TAN, LG

RED, LG

TAN, SM



RED, SM



ORANGE

Olympia Suede, Large

Arg.Oly.Sd.Lg

Suede

Internal zip pocket, phone slot,
and key fob.

Handle drop 8"

9" W x 7.5" D x 9" H

Made in Argentina



BLACK, SM & LG

TAUPE, LG

Available Colors in Large:
Taupe, Black, Olive, Orange,
& Violet

Olympia Suede, Small

Arg. Oly. Sd. Sm

Suede

Internal zip pocket, phone slot,
w/ key fob.

Handle drop 8.5".

12" W x 6" D x 14" H

Made in Argentina



OLIVE, SM & LG

VIOLET, SM & LG

ORANGE, SM & LG

Available Colors in Small:
Black, Olive, Orange, &
Violet



ORANGE



OLIVE, RED & TAUPE
COMBO, LG

OLIVE, RED & TAUPE
COMBO, SM

**Olympia Suede Combo,
Large**

Arg.Oly.SdCo.Lg

Suede

Internal zip pocket, phone slot
w/ key fob.

Handle drop 8.5".

12" W x 6" D x 14" H

Made in Argentina

**Olympia Suede Combo,
Small**

Arg.Oly.SdCo.Sm

Suede

Internal zip pocket, phone slot
w/ key fob.

Handle drop 8.5".

12" W x 6" D x 14" H

Made in Argentina



VIOLET, LIME &
ORANGE COMBO, SM

VIOLET, LIME &
ORANGE COMBO, LG





ORANGE

OLIVE

BLACK

CORN



BLACK

Rosario

Arg.Ros

Suede with leather and brass accents w/ magnet closure. Internal zip pocket, cell slot w/key fob.

Handle drop 10".

13" W x 7" D x 12" H

Made in Argentina

R o s a r i o

BLACK

www.tloekman.com • 404-748-1018



Espuma, Suede

Arg. Esp. Sd

Suede

handle 10 in drop | internal zip

size: 13 x 6 x 12 in

pocket 8 x 6 in; 2.5 x 1 x 3.5

in phone slot; key fob | zipper

closure

Made in Argentina



* Full color spectrum next page



RED



NATURAL
LEATHER

Espuma, Leather

Arg.Esp.L

Leather

Internal zip pocket, phone slot,

key fob w/ zipper closure

Handle drop 10".

13" W x 6" D x 12" H

Made in Argentina



RED

404-748-1018



BLACK

TAUPE

SAND



ORANGE



VIOLET



RED



OLIVE

www.tlockman.com • 404-748-1018



ROSE PINK



Shopper

Arg.Shop

Suede with snap closure
Internal zip pocket, cell slot,
w/ key fob
Handle drop 7".
15.5" W x 4.5" D x 12" H
Made in Argentina

** Full color spectrum next page*

BLACK



RED



LIME



CHOCOLATE



TAUPE

IRIS BLUE

Shopper

Arg.Shop

Suede with snap closures.
internal zip pocket , cell slot,
w/ key fob

Handle drop 7".

15.5" W x 4.5" D x 12" H

Made in Argentina

CORN

ORANGE



T a m B

Tam

Arg. Tam

Suede with snap closure

Strap length 47".

8.3" W x .25" D x 6" H

Made in Argentina

BLACK

ORANGE

ROSE PINK

A g



WINE

CHOCOLATE

TAUPE

CORN

ORANGE

RED



ORANGE

BLACK
IRIS BLUE
VIOLET



LIME

ROSE PINK

T-Shirt Bag

Arg.TSh

Suede with brass accents.
internal pocket, cell slot,
w/key fob

Adjustable strap length 41".

11.8" W x .5" D x 12.9" H

Made in Argentina



TOBACCO

OLIVE

GRASS / NAVY

Wallets

Arg.Wal

Suede w/ snap closure. Belt loop slot on larger. Interior sub-wallet (4.75" W x .25" D x 3.25" H).
7.5" W x .25" D x 6" H
Made in Argentina

VIOLET / ROSE

NAVY / GRASS

ROSE / VIOLET

VIOLET / ROSE



OLIVE / ORANGE



GRASS / NAVY



NAVY / GRASS



RED / BROWN



ROSE / VIOLET



BROWN / RED



BLACK / BLACK



ORANGE / OLIVE



eReader covers

eReader Cover Arg.ERC

Suede two tone with magnetic snap closure, pen/pencil holder slot, with elastic tablet holders. Holds the following e-readers: Amazon Kindle® (6" models only), Barnes & Noble Nook® 7.7" model, nextbook® (models 2, 3, 5 & 6), BlackBerry Play-Book®, ViewSonic ViewPad 7", Maylong Universe M-150, Kobo® Wireless Reader, Ematic® 7", Aluratek® AEBK01FS, and the Archos® 70.
8.5" H x 1" D x 6.5" W
Made in Argentina



ORANGE / TAUPE

VIOLET / LIME

TAUPE / ORANGE

ELASTIC NOTEPAD
HOLDER HOLDS A
STANDARD 5" X 8"
NOTEPAD.

OLIVE / RED

RED / OLIVE

LIME / VIOLET

Fits these popular
Tablet e-Readers
and more:



OLIVE / RED



Mini Bag
Arg. Mini
Suede & leather
w/ snap closure
Strap drop 25".
7.5" W x .25" D x 7.5" H
Made in Argentina



LIME

VIOLET

MAX STYLE. MINI BAG.



COMBO IN VIOLET,
ORANGE & LIME



COMBO IN VIOLET,
ORANGE & LIME

t w o s i d e d
C l u t

Clutch

Arg.CI

Suede with zip closure.
External pocket.
11" W x .25" D x 8.25" H
Made in Argentina

COMBO IN OLIVE,
RED & TAUPE



COMBO IN VIOLET,
ORANGE & LIME



COMBO IN VIOLET,
ORANGE & LIME



c h



Leather Laptop Traveller
Arg.Lap.L

Leather

Large interior open pocket, Full 100% Cotton lining and zip closure. External lined front pocket (13.75" W x 1.25" D x 9" H)

Removable, adjustable 100% Cotton strap, 1" wide extends to 55.5"

17" W x 2.5" D x 11.5" H

Made in Argentina





ORANGE



STONE





OLIVE



STONE

TAUPE

Suede Laptop Traveller

Arg.Lap.Sd

Suede

Large interior open pocket, full 100% Cotton lining and zip closure. External lined front pocket (13.75" W x1.25" D x 9" H)

Removable, adjustable 100% Cotton strap, 1" wide extends to 55.5"

17" W x 2.5" D x 11.5" H

Made in Argentina



IVORY

Monk Bag

Arg.Mk

Leather

Internal pocket, cell slot

w/key fob

Strap drop 20".

30" W x 6" D x 12" H

Made in Argentina



RED

BLACK

LIME



ESPRESSO

IVORY



IVORY



TAN



TAN

BLACK

Cala, Purse
Arg. Cala.Ps
Pressed leather
Internal pocket, cell slot
w/ key fob.
Handle drop 7.5".
14" W x 5" D x 9" H
Made in Argentina



TAN

BLACK



TAN

Cala, Briefcase

Arg. Cala.BF

Pressed leather
Internal pocket, cell slot
w/key fob.

Handle drop 8.5".

16" W x 4.5" D x 12" H

Made in Argentina

Triband

Arg. Tri

Suede

Internal pocket, cell slot
w/key fob

Handle drop 11"

18" W x 4"D x 13" H

Made in Argentina



TURQUOISE / ORANGE / TAUPE

PINK / STEEL / GRAPHITE





TURQUOISE / ORANGE / TAUPE



BLACK



TAN



BLACK



o u r
R E B E L
B E L -
L I O U S
L I O U S
M e s s e n g e r

BLACK

Messenger

Arg.Msg

Pressed Leather
Fold over closure, magnet
adjustable strap. Internal pocket,
cell slot w/ key fob.
Strap length 42".
12" W x 2.25" D x 11" H
Made in Argentina

www.tlockman.com • 404-748-1018



NATURAL LEATHER TRIM,
TEAL BLUE SUEDE ACCENT

RED LEATHER TRIM. GRAPHITE
SUEDE ACCENT

BLACK LEATHER TRIM, HOT PINK
SUEDE ACCENT

Cargo Bag

Arg.Car

100% Cotton canvas with suede
& leather accents.

Internal pocket, cell slot w/key
fob. Leather/ magnet closure
and side clip.

Handle drop 12".

19" W x 9.25" D x 15.5" H

Made in Argentina



RED LEATHER TRIM.
GRAPHITE SUEDE ACCENT

This playful collection of totes and bags are designed for us in France and made in India. Ranging from light weight cotton coin purses to laminate lined canvas totes perfect for the pool or beach, each bag has a light and fun feel while maintaining durability. This collection is of-the-moment, casual, and efficient.





T. LOCKMAN LLC
Baobab
Collection
- France -



LIBERTY STYLE PRINT
IN DARK BLUE





**Adjustable Pouch,
Liberty Blue**

BAO.AP.LiBI

100% Cotton.

Lined interior. 2 front zip pockets

1 inside open pocket 9 x 6.25 in

front lower pocket 7 x 5 | front

upper pocket 10 x 10.5 in

Removable adjustable strap

extends to 62"

10.25" W x 10.75" H

Imported from France



LIBERTY STYLE PRINT
IN DARK BLUE



Osaka Bag

BAO.0s

100% Cotton
Lined interior. Internal zip
pocket.
Handle drop 10"
11.5" x .25" x 15.75"
Imported from France



KIMONO PRINT IN PINK



KIMONO PRINT IN PINK



HIBISCUS PRINT IN
MANGO, WITH PINK
LIBERTY ACCENT

Hobo Bag, Hibiscus
BAO.Bo.Hi
100% Cotton
Lined interior.
Strap drop 20".
10.5" x 9.5".
Imported from France



HIBISCUS PRINT IN
BERRY, WITH SKY BLUE
LIBERTY ACCENT



HIBISCUS PRINT IN
MANGO, WITH PINK
LIBERTY ACCENT



HIBISCUS PRINT IN
LIME, WITH DARK BLUE
LIBERTY ACCENT



The Train Bag

BAO.Train

100% Cotton

Lined interior with zip closure
and open pocket on front.

Handle drop 8".

17.75" W x 4.25"D x 14" H

Imported from France





LIBERTY STYLE PRINT
IN PALE BLUE & GREY



LIBERTY STYLE PRINT
IN RED



LIBERTY STYLE
PRINT IN ROSE PINK



Pouchette in Liberty Style

BA0.Po.Li

100% Cotton

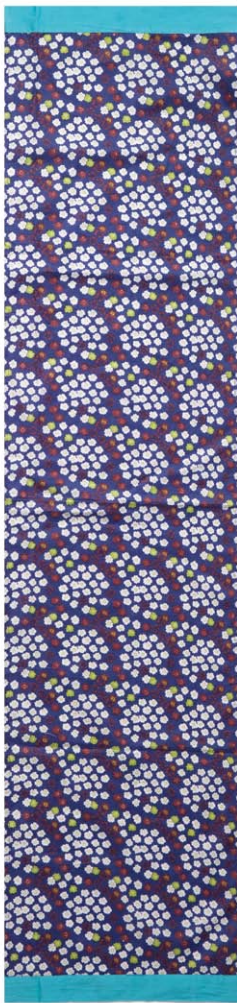
Lined interior with zip closure.

5" tall | length @ mouth 5.6"

| length @ "hip" 8" | length @

base 6"

Imported from France



Scarf, "Liberty" Style, Blue
BAO.Sc.Lib
100% Cotton
54" L x 13.25" W
Imported from France





ROSE PINK

Deck Bag
Bao.Deck.
100% Cotton Canvas
Water-proof Laminate interior.
Handle drop 5.5".
17.5" W x 8"D x 15" H
Imported from France



TEAL



ROSE PINK



STONE



TEAL



STONE

DECKBAG



www.tloekman.com • 404-748-1018

GS



BAOBAB. DECK BAG, RUST

www.tloockman.com • 404-748-1018



Deck Bag

Bao.Deck.

100% Cotton canvas

Water-proof Laminate interior.

Handle drop 5.5".

17.5" W x 8"D x 15" H

Imported from France



RUST



RUST



PLUM



PLUM



Deck Bag

Bao.Deck.

100% Cotton canvas

Water-proof Laminate interior.

Handle drop 5.5".

17.5" W x 8"D x 15" H

Imported from France



CIRCLES ON PLUM

CIRCLES ON PLUM



CIRCLES ON LIME



CIRCLES ON LIME

Deck Bag

Bao.Deck.

100% Cotton canvas
Water-proof Laminate interior.
Handle drop 5.5".
17.5" W x 8"D x 15" H
Imported from France

FULL PATTERN,
TAUPE



FULL PATTERN,
TAUPE

HALF PATTERN,
TAUPE



FULL PATTERN,
PINK



HALF PATTERN,
TAUPE



FULL PATTERN,
PINK



STEEL TRIM

PLUM TRIM



LIME TRIM



LIME TRIM

Baobab Velvet Stripes

Bao.Vel

100% Cotton velvet

Internal pocket.

Handle drop 8".

13.6" W x 2" D x 15.6" H

Imported from France

T. LOCKMAN LLC Handbags & Accessories Definition of Terms

Cabas:

French word for a large, open mouthed bag or tote.

Canvas:

Thick cotton material.

Cell slot:

An internal pocket that holds a mobile phone.

Expansion tabs:

Folded fabric that, when unfolded, provides extra space.

Key fob:

A key chain attached to the inside of the purse.

Linen:

Lightweight material made from flax

Recycled Leather:

scraps of leather fused together with glue or similar compound, then pressed flat into shapes.

Napa Leather:

A full grain, top notch leather; usually from kid (baby goat), lamb, or sheepskin.

Suede:

A type of leather with a soft, napped (fuzzy) finish.

Sustainable:

Capable of being used repeatedly, without exhausting the resources or causing severe damage to the environment.

Vegetable Dyes:

Dyes derived from plants; can cause some irregularity in color quality, but contain fewer toxins than synthetic dyes.

Pressed leather:

Leather that has been embossed with a pattern.

Weather-treated canvas:

Canvas that has been treated to withstand some

T. LOCKMAN LLC Handbags & Accessories Care Instructions

For Leathers: DRY CLEAN ONLY.

Keep in a dry place, away from direct sunlight to prevent fading.

We strongly discourage using cleaner of any kind on ink marks or grease stains. If necessary, spot treatment should be handled by a professional; however with darker leathers, most wear marks will eventually blend in.

If leather begins to dull, buff the surface with a wool cloth to restore luster.

For Suedes and Nubucks: DRY CLEAN ONLY.

Keep in a dry place, away from direct sunlight to prevent fading.

Do not wash with soap or detergents. A suede or nubuck cleaning kit is strongly recommended and can be purchased from most shoe and luggage dealers.

For removal of spots and mild stains, gently sweep over the hide using a suede brush.

For Cotton Canvas & Treated Canvas: DRY CLEAN ONLY.

Keep in a dry place, away from direct sunlight to prevent fading.

Do not attempt to clean pen or ink stains. Doing so will only cause them to spread.

Spot clean all other marks and mild stains with lukewarm water and very mild soap.

Store all canvas goods away from moths and insects.

For Wool Bags: DRY CLEAN ONLY.

Spot clean with lukewarm water and very mild soap.

Store all wool goods away from moths and insects.

For Cloth Linings: DRY CLEAN ONLY.

Baby wipes may be used for spot cleaning.

T. LOCKMAN LLC Handbags & Accessories Color Index



BLACK

24, 25, 26, 27, 28, 29, 39,
46, 68, 88, 90, 91, 96,
100, 101, 103, 104, 108,
111, 113, 115, 118, 127,
128, 129, 132



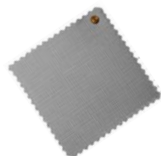
DARK BROWN

20, 21, 24, 27, 39, 52,
72, 73, 108, 115, 118,
127



CURRY

31, 37, 47, 51, 55,
56, 60



GREY

11, 12, 13, 17, 20, 21,
33, 39, 43, 52, 53, 56,
65, 66, 69, 71



BROWN

14, 32, 37, 39, 57, 62,
64, 68, 88, 113, 118



YELLOW

31, 47, 100, 109, 112



LIGHT GREY

43



TAUPE

14, 22, 33, 47, 50, 64,
70, 72, 73, 96, 102, 105,
109, 112, 117, 118, 124



STONE

30, 124, 127, 134, 148



WHITE

92, 93



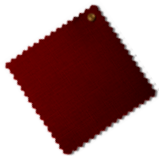
TAN

52, 94, 95, 102, 103,
110, 122, 128, 129, 132



NATURAL

40, 43, 64, 148



BURGUNDY
31, 32, 48, 50, 56, 65,
112



NAVY BLUE
14, 17, 57, 109, 113,
115, 138



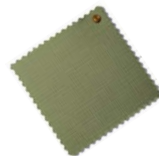
GREEN
10 (Bronze), 79, 115



RED
37, 94, 95, 102, 103,
105, 108, 112, 115, 117,
118, 121, 127, 146



BLUE
36, 60, 78, 84, 144, 147



OLIVE
14, 18, 19, 32, 37, 39,
51, 57, 68, 72, 73, 97,
98, 100, 105, 113, 115,
117, 118, 124



PINK
36, 47, 58, 59, 60, 76, 78,
85, 106, 111, 113, 115,
118, 130, 141, 143, 146,
148, 157



LIGHT BLUE
31, 36, 44, 46, 60, 76,
78, 80, 81



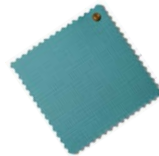
LIME
108, 113, 117, 118,
127, 143



ORANGE
56, 89, 96, 97, 100, 104,
105, 109, 111, 112, 117,
118, 124, 143



PURPLE
33, 47, 57, 60, 79, 82, 83,
89, 96, 97, 99, 102, 103,
105, 113, 115, 117, 118,
120, 138, 153



TEAL
79, 80, 82, 83, 125,
148, 158

T. LOCKMAN LLC

BOOK TWO:

Purchasing Information
Retail Order Info 166
To-The-Trade Order Info 168
Wholesale Order Info 170

BOOK TWO

T. LOCKMAN LLC

Purchasing Information



T. LOCKMAN LLC Retail Order Information

RETAIL ORDER CONTACT INFORMATION:

Call to order 404-748-1031

Hours of operation: Monday through Friday.
9am -5pm EST.

To order by fax:
Download and print faxable order form at:
www.tlockman.com/pdfs/forms/retail_orderform.pdf
Fax form to: 1-866-406-7416

PRICE LISTS & PRICING:

On www.tlockman.com in the "catalog" section select the appropriate price list type and fill out the request form. A current price list will be emailed to you as soon as the information is verified. Wholesale and To-the-Trade lists must have a proper Tax ID Number to receive a price list. All price lists will be updated monthly.

RETAIL PAYMENT GUIDELINES

All payments must be made by a valid credit card. Checks or C.O.D are not accepted. "Web Specials" are only valid during the advertised special dates and are not valid on reorders. Retail consumers are only allowed to purchase from the retail price lists and designated retail areas of the website. Tax ID and/or Business license numbers are verified before all wholesale / To-the-trade accounts are created. Fraudulent numbers will result in an instant order cancellation and be charged a 50% cancellation fee.

RETAIL ORDER CANCELLATION POLICIES

Stock item cancellations can only be done within 24 hours of placing the order at a 15% restocking fee. Any cancellation after 24 hours of non-stock items will incur a 50% restocking fee.

SHIPPING POLICIES

We ship our in-stock products to arrive via UPS in 8-10 business days. When ordering please provide a daytime phone number for delivery. Any shipment outside of the continental United States require special shipping and the Retail Customer Service must be contacted at 404-748-1031. Shipping rates (shown below) are for each address. Orders usually ship within 48 hours of being charged unless the item is shipping from the origin mill, then arrival time is stated on in the items description. We do not ship outside the US and Canada, nor to the US Territories including Guam, Puerto Rico and the US Virgin Islands.

PO / APO / FPO BOXES

We do not ship to PO Boxes. Please call Retail Customer Service at 404-748-1031 to place an order for APO or FPO addresses.

SHIPPING CHARGES

We stock and ship our products via UPS to arrive within 8-10 business days. When ordering please provide a daytime phone number for delivery.

Charges below are for the continental 48 United States.

Up to \$150	\$15
\$150 - 400	10% of merchandise total
\$401 - 499	8% of merchandise total
\$500 & over	5% of merchandise total

ALASKA & HAWAII SHIPPING

For Shipping to Alaska and Hawaii contact Retail Customer Service at 404-748-1031.

SHIPPING TO CANADA

All items ship from the United States. All prices shown are in US dollars. Please contact us directly at 404-748-1031 for shipments to Canada.

RUSH DELIVERY

Rush delivery charges are only applicable for the continental 48 United States. Rush delivery is not available to APO/FPO addresses, PO Boxes or Canada. For Rush Delivery to Alaska and Hawaii or Overnight services in the Continental United States contact Retail Customer Service at 404-748-1031.

RUSH DELIVERY CHARGES

1-2 day rush delivery
- Orders valued at \$350 or less additional \$150
- Orders valued at \$350 or more additional \$250

3-4 day rush delivery
- An additional \$125

SALES TAX

Purchases from within the state of Georgia will be subject to a 4% sales tax on all purchases.

DAMAGED ITEM RETURN POLICIES

All items are thoroughly inspected before shipping to insure no DOA arrivals. In the uncanny event that an item is delivered in an unusable state, a claim will be made with the appropriate shipping company for compensation and the item will be reissued. Do not accept a package from a shipper that demonstrates damage, i.e., holes, moisture, or extremely crushed.

Prior to returning a damaged item a Damage Authorization Number (D.A.N.) must be issued by a T.Lockman LLC customer service representative. The D.A.N. must be written on the original invoice and mailed back with the damaged product. The customer is responsible for shipping and insurance fees to return the damaged item. Upon receipt of the item a replacement item will be sent or a refund issued by check.

Display samples, clearance, and discontinued items are non-returnable or refundable. These nonrefundable items are marked as such upon purchase. One of a kind items such as Origanimals are not available for return, these art-items are handmade with recycled materials and irregularities are a part of the manufacturing. Returns are also not accepted for vintage, antique, special-order, non-stock or other handmade items.

STANDARD RETURN POLICIES

Non-damaged item returns can only be made 30 days after purchase and will incur 15% restocking fee.

Prior to returning an item a Return Authorization Number (R.A.N.) must be issued by phone by a T.Lockman LLC customer service representative. The R.A.N. must be written on the original invoice and mailed back with the damaged product. The customer is responsible for shipping and insurance fees to return the damaged item. Upon receipt and inspection of the item a refund check will be issued.

Display samples, clearance, and discontinued items are non-returnable or refundable. These nonrefundable items are marked as such upon purchase. One of a kind items such as Origanimals are not available for return, these art-items are handmade with recycled materials and irregularities are a part of the manufacturing. Returns are also not accepted for vintage, antique, non-stock, special-order, non-stock or other handmade items.

ERRORS

There may be errors in the prices, descriptions or images of certain merchandise, and we must reserve the right to restrict orders of those items.

PRODUCT QUALITY & VARIANCES

T. Lockman, LLC handbags use natural dyes as colorants; which means there will be slight coloration differences. Animal hide products will occasionally have skin imperfections. The linen bags may also have milling imperfections, attributed to the materials construction prior to being bag crafted. These aspects are beyond our control and add to the natural materials character.

T. LOCKMAN LLC To-The-Trade Order Information

TO-THE-TRADE ORDER CONTACT INFORMATION:

Call to order 404-748-1018

Hours of operation: Monday through Friday.
9am -5pm EST.

To order by fax:

Download and print faxable order form from:
www.tlockman.com/pdfs/forms/tothetrade_orderform.pdf.

Fax form to: 1-866-406-7416

PRICE LISTS & PRICING:

On www.tlockman.com in the "catalog" section select the appropriate price list type and fill out the request form. Wholesale and To-the-Trade lists must have a proper Tax ID Number to receive a price list. All price lists will be updated monthly.

TO-THE-TRADE PAYMENT GUIDELINES

All order payments must be made by a valid credit card. Checks must fully clear before order ships. Bounced checks will be charged a \$50 fee and must be remitted with a valid credit card for order completion. C.O.D is not accepted. "Web Specials" are only valid during the advertised special dates and are not valid on reorders. Retail consumers are only allowed to purchase from the retail price lists and designated retail areas of the website. Tax ID and/or Business license numbers are verified before all wholesale / To-the-trade accounts are created. Fraudulent numbers will result in an instant order cancellation and charged a 50% cancellation fee.

TO-THE-TRADE NET TERM GUIDELINES

Net 30 days is available for AAA on S&P rated accounts. Non-Stock or New Release may require a 60% deposit and the 40% balance to be billed Net 30. Other or non-rated accounts must prepay by credit card. New accounts must fill a credit application for negotiation for extended payment terms and must be approved. No orders will be shipped on past due accounts, and may result in collections.

TO-THE-TRADE ORDER CANCELLATION POLICIES

An order can only be cancelled within 48 hours of purchase and will incur a 50% cancellation fee.

SHIPPING POLICIES

We ship our in-stock products to arrive via UPS from 8-10 business days. When ordering please provide a daytime phone number for delivery. Any shipments outside of the continental United States will require special shipping and the Retail Customer Service must be contacted at 404-748-1031. Shipping rates (shown below) are for each address. Orders usually ship within 48 hours of be-

ing charged unless the item is shipping from the origin mill, then arrival time is stated on in the items description. New shipments frequently arrive, so our in stock list is continually fluctuating. If something is ordered from our international mills, then shipping an item can take up to four to eight weeks, depending upon the mills production schedules. Consumers will be advised of any potential delivery delays within 48 hours of order placement. Orders placed at tradeshow will receive the delivery terms at time of order. We do not ship outside the US and Canada, nor to the US Territories including Guam, Puerto Rico and the US Virgin Islands. For sales and distribution outside the US and Canada a specific distribution agreement must be negotiated by T.Lockman Sales (404-748-1018).

PO / APO / FPO BOXES

We do not ship to PO Boxes. Please call Customer Service at 404-748-1018 to place an order for APO or FPO addresses.

SHIPPING CHARGES

We stock and ship our products via UPS to arrive within 8-10 business days. When ordering please provide a daytime phone number for delivery.

Charges below are for the 48 continental United states.

Up to \$150	\$15
\$150 - 400	10% of merchandise total
\$401 - 499	8% of merchandise total
\$500 & over	5% of merchandise total

ALASKA & HAWAII SHIPPING

For Shipping to Alaska and Hawaii contact To-The-Trade Customer Service at 404-748-1018.

SHIPPING TO CANADA

All items ship from the United States. All prices shown are in US dollars. Please contact us directly at 404-748-1018 for shipments to Canada.

SHIPPING USING SHIPPING ACCOUNTS

We are willing to utilize your internal Fed Ex or UPS Accounts for shipping. You will be charged a \$6.50 handling and packaging fee. To ship using a corporate account contact Wholesale Customer Service at 404-748-1018.

RUSH DELIVERY

Rush delivery charges are only applicable for the continental 48 United States. Rush delivery is not available to APO/FPO addresses, PO Boxes or Canada. For Rush Delivery to Alaska and Hawaii or Overnight services in the Continental United States contact Retail Customer Service at 404-748-1018.

RUSH DELIVERY CHARGES

1-2 day rush delivery
- Orders valued at \$350 or less additional \$150
- Orders valued at \$350 or more additional \$250

3-4 day rush delivery
- An additional \$125

SALES TAX

Purchases within the state of Georgia will be subject to a 4% sales tax on all purchases.

ITEM RETURN POLICIES

All items are thoroughly inspected before shipping to insure no DOA arrivals. In the uncanny event that an item is delivered in an unusable state, a claim will be made with the appropriate shipping company for compensation and the item will be reissued. Do not accept a package from a shipper that demonstrates damage, i.e., holes, moisture, or extremely crushed.

Prior to returning a damaged item a Damage Authorization Number (D.A.N.) must be issued by a T.Lockman LLC customer service representative. The D.A.N. must

be written on the original invoice and mailed back with the damaged product. The customer is responsible for shipping and insurance fees to return the damaged item. Upon receipt of the item a replacement item will be sent or a company account credit will be issued.

Display samples, clearance, and discontinued items are non-returnable or refundable. These nonrefundable items are marked as such upon purchase. One of a kind items such as Origanimals are not available for return. These art-items are handmade with recycled materials and irregularities are a part of the manufacturing. Returns are also not accepted for vintage, antique, special-order, non-stock or other handmade items.

ERRORS

There may be errors in the prices, descriptions or images of certain merchandise, and we must reserve the right to restrict orders of those items.

PRODUCT QUALITY & VARIANCES

T. Lockman, LLC handbags use natural dyes as colorants; which means there will be slight coloration differences. Animal hide products will occasionally have skin imperfections. The linen bags may also have milling imperfections, attributed to the material's construction prior to being bag crafted. These aspects are beyond our control and add to the natural material's character.

SWATCHES & COLOR MATCHES

Upon request the closest matching pantone specifications for products can be provided. T.Lockman generally does not mail out individual color swatches. For a more thorough color matching a swatch can be mailed to T.Lockman and match verification can be confirmed before ordering. If you need color matching assistance contact customer service at 404-748-1018.

TRADESHOW PURCHASES

All tradeshow purchases will be charged a 50% deposit at time of purchase. Any cancellations will forfeit the 50% deposit. The balance of the order and shipping will be charged at time of shipping.

T. LOCKMAN LLC Wholesale Order Information

RETAIL ORDER CONTACT INFORMATION:

Call to order 404-748-1018

Hours of operation: Monday through Friday.
9am -5pm EST.

To order by fax:

Download and print faxable order form from:
www.tlockman.com/pdfs/forms/wholesale_orderform.pdf

Fax from to: 1-866-406-7416.

PRICE LISTS & PRICING:

On www.tlockman.com in the "catalog" section select the appropriate price list type and fill out the request form. Wholesale and To-the-Trade lists must have a proper Tax ID Number to receive a price list. All price lists will be updated monthly.

WHOLESALE PAYMENT GUIDELINES

All payments must be made by check or a valid credit card. Checks must fully clear before order ships. Bounced checks will be charged a \$50 fee and must be remitted with a valid credit card for order completion. C.O.D is not accepted. "Web Specials" are only valid during the advertised special dates and are not valid on reorders. Retail consumers are only allowed to purchase from the retail price lists and designated retail areas of the website. Tax ID and/or Business license numbers are verified before all wholesale / To-the-trade accounts are created. Fraudulent numbers will result in instant order cancellation and charged a 50% cancellation fee.

WHOLESALE NET TERM GUIDELINES

Net 30 days is available for AAA on S&P rated accounts. Non-Stock or New Release may require a 60% deposit and the 40% balance to be billed Net 30. Other or non-rated accounts must prepay by credit card. New accounts must fill a credit application for negotiation for extended payment terms and must be approved. No orders will be shipped on past due accounts, and may result in collections.

WHOLESALE ORDER CANCELLATION POLICIES

An order can only be cancelled within 48 hours of purchase and will incur a 50% cancellation fee.

SHIPPING POLICIES

We stock and ship our products to arrive via UPS from 8-10 business days. When ordering please provide a daytime phone number for delivery. Shipments outside of the continental United States require special shipping and the shipping rates (shown below) are for each address. Items in stock usually ship within 7 business days. New shipments frequently arrive, so our in stock list is

continually fluctuating. If something is ordered from our international mills, then shipping an item can take up to four to eight weeks, depending upon the mills production schedules. Consumers will be advised of any potential delivery delays within 48 hours of order placement. Orders placed at tradeshow will receive the delivery terms at time of order. We do not ship outside the US and Canada, nor to the US Territories including Guam, Puerto Rico and the US Virgin Islands. For sales and distribution outside of the US and Canada contact T.Lockman Sales at 404-748-1018.

PO / APO / FPO BOXES

We do not ship to PO Boxes. Please call Customer service at 404-748-1018 to place an order for APO or FPO addresses.

SHIPPING CHARGES

We stock and ship our products via UPS to arrive within 8-10 business days (Unless otherwise stated). When ordering please provide a daytime phone number for delivery.

Charges below are for the 48 Continental United states.

Up to \$150	\$15
\$150 - 400	10% of merchandise total
\$401 - 499	8% of merchandise total
\$500 & over	5% of merchandise total

ALASKA & HAWAII SHIPPING

For shipping to Alaska and Hawaii contact Wholesale Customer Service at 404-748-1018.

SHIPPING TO CANADA

All items ship from the United States. All prices shown are in US dollars. Please contact us directly at 404-748-1018 for shipments to Canada.

SHIPPING USING SHIPPING ACCOUNTS

We are willing to utilize your internal Fed Ex or UPS Accounts for shipping. You will be charged a \$6.50 handling and packaging fee. To ship using a corporate account contact Wholesale Customer Service at 404-748-1018.

RUSH DELIVERY

Rush delivery charges are only applicable for the continental 48 United States. Rush delivery is not available to APO/FPO addresses, PO Boxes or Canada. For Rush Delivery to Alaska and Hawaii or Overnight services in the Continental United States contact Retail Customer Service at 404-748-1018.

1-2 day rush delivery
- Orders valued at \$350 or less additional \$150
- Orders valued at \$350 or more additional \$250

3-4 day rush delivery
- An additional \$125

SALES TAX

Purchases from within the state of Georgia will be subject to a 4% sales tax on all purchases.

ITEM RETURN POLICIES

All items are thoroughly inspected before shipping to insure no DOA arrivals. In the uncanny event that an item is delivered in an unusable state, a claim will be made with the appropriate shipping company for compensation and the item will be reissued. Do not accept a package from a shipper that demonstrates damage, i.e., holes, moisture, or extremely crushed.

Prior to returning a damaged item a Damage Authorization Number (D.A.N.) must be issued by a T.Lockman LLC customer service representative. The D.A.N. must be written on the original invoice and mailed back with

the damaged product. The customer is responsible for shipping and insurance fees to return the damaged item. Upon receipt of the item a replacement item will be sent or a company account credit will be issued.

Display samples, clearance, and discontinued items are non-returnable or refundable. These nonrefundable items are marked as such upon purchase. One of a kind items such as Origanimals are not available for return. These art-items are handmade with recycled materials and irregularities are a part of the manufacturing. Returns are also not accepted for vintage, antique, special-order, non-stock or other handmade items.

ERRORS

There may be errors in the prices, descriptions or images of certain merchandise, and we must reserve the right to restrict orders of those items.

PRODUCT QUALITY & VARIANCES

T. Lockman, LLC handbags use natural dyes as colorants; which means there will be slight coloration differences. Animal hide products will occasionally have skin imperfections. The linen bags may also have milling imperfections, attributed to the materials construction prior to being bag crafted. These aspects are beyond our control and add to the natural materials character.

POINT OF SALE & DISPLAYS

The T.Lockman LLC Throw columns, constructed of wood and Plexiglas, are available for sale in customized heights and finishes. With an order of 15 or more throws you can request a column free of charge (shipping and handling not included). Posters, POP, POS and custom product photography are available for retailer usage. Contact Wholesale Customer service for additional information.

TRADESHOW PURCHASES

All tradeshow purchases will be charged a 50% deposit at time of purchase. Any cancellations will forfeit the 50% deposit. The balance of the order and shipping will be charged at time of shipping.

T. LOCKMAN LLC

BOOK THREE:

Throws

Classic Solids	174
Classic Tartans & Patterns.....	186
Nina Campbell for Johnstons	216
Contemporary	248
Cottage	284
Crofting Collection	306
Modern	314
Patchwork & Collage	338
American Yacht	350
Baby & Infant Blankets	360
Peruvian Throws	378
Definitions of Terms	390
Care Instructions	391
Color Index	392

BOOK THREE

T. LOCKMAN REC

Throws



www.tlockman.com • 404-748-1018

The Classic Solid Collection is the group of lambswool and cashmere throws in our range of solid colors. Offered in a traditional color palette and some jewel tones. These elegant, over-sized throws are made in Scotland using top of the line materials for softness and warmth.





T. LOCKMAN LTD
Classic
Solids
- Scotland -

AMZ-A200 / DJ-A200



AMZ-A200

100% Cashmere
Single weight: light grey solid.
Fringe drop 4".
74" L x 54.6" W
Made in Scotland

DJ-A200

100% Lambswool
Single weight: light grey solid.
Fringe drop 4".
74" L x 54.6" W
Made in Scotland

DJ-A501 / AMZ-A700



DJ-A501

100% Lambswool
Single weight: dark grey solid.
Fringe drop 4".
74" L x 54.6" W
Made in Scotland

AMZ-A700

100% Cashmere
Single weight: dark grey solid.
Fringe drop 4".
74" L x 54.6" W
Made in Scotland



DJ-A900

100% Lambswool
Single weight: black solid.
Fringe drop 4".
74" L x 54.6" W
Made in Scotland



AMZ-A900

100% Cashmere
Single weight: black solid.
Fringe drop 4".
74" L x 54.6" W
Made in Scotland

AMZ-H0333

www.tlocckm.com • 404-748-1018



AMZ-H0333

100% Cashmere
Single weight: oatmeal mix.
Fringe drop 4".
74" L x 54.6" W
Made in Scotland

AMZ-A000

100% Cashmere
Single weight: white solid.
Fringe drop 4".
74" L x 54.6" W
Made in Scotland

DJ-B1058

100% Lambswool
Single weight: cream solid.
Fringe drop 4".
74" L x 54.6" W
Made in Scotland

AMZ-B1058

100% Cashmere
Single weight: cream solid
Fringe drop 4"
74" L x 54.6" W
Made in Scotland

AMZ-B0106

100% Cashmere
Single weight: honey oat.
Fringe drop 4".
74" L x 54.6" W
Made in Scotland

2-3 week delivery from Scotland

AMZ-A000



DJ-B1058 / AMZ-B1058



AMZ-B0106



AMZ-B311

AMZ-B311

100% Cashmere
Single weight: vicuna solid.
Fringe drop 4".
74" L x 54.6" W
Made in Scotland

DJ-B277

100% Lambswool
Single weight: camel solid.
Fringe drop 4".
74" L x 54.6" W
Made in Scotland

AMZ-B277

100% Cashmere
Single weight: camel solid.
Fringe drop 4".
74" L x 54.6" W
Made in Scotland

DJ-B806

100% Lambswool
Single weight: espresso brown solid.
Fringe drop 4".
74" L x 54.6" W
Made in Scotland

AMZ-B8002

100% Cashmere
Single weight: espresso brown solid.
Fringe drop 4".
74" L x 54.6" W
Made in Scotland



DJ-B277 / AMZ-B277



DJ-B806 / AMZ-B8002



AMZ-D126



AMZ-D707



AW-H0396



AMZ-D126

100% Cashmere
Single weight: pale blue solid.
Fringe drop 4".
74" L x 54.6" W
Made in Scotland

AMZ-D707

100% Cashmere
Single weight: navy solid.
Fringe drop 4".
74" L x 54.6" W
Made in Scotland

AW-H0396

100% Cashmere
Single weight: porcelain blue solid.
Fringe drop 4".
68.25" L x 54.6" W
Made in Scotland

AMZ-E510



AW-E0154

AMZ-E510

100% Cashmere
Single weight: red solid.
Fringe drop 4".
74" L x 54.6" W
Made in Scotland

AW-E0154

100% Cashmere
Single weight: pale pink solid.
Fringe drop 4".
68.25" L x 54.6" W
Made in Scotland



Classics by definition are timeless. The same goes for our tartans, a line of throws consisting of traditional plaids accompanied by distinguished patterns rooted deep in Scottish history. The weaves are soft and tactile, and come in both lambswool and cashmere.





T. LOCKMAN LTD
Classic
Tartans &
Patterns
- Scotland -





DDW-X315

100% Lambswool
Reversible tartan: Antique
Royal Stewart, Antique
Hunting Stewart.
Fringe drop 4".
74" L x 54.6" W

Made in Scotland

2-3 week delivery from Scotland

DJ-K467 / AMZ-K467



DJ-K467

100% Lambswool
Single weight: antique
royal stewart tartan.
Fringe drop 4".
74" L x 54.6" W.
Made in Scotland

4-8 week delivery from Scotland

AMZ-K467

100% Cashmere
Single weight: antique
royal stewart tartan.
74" L x 54.6" W
Fringe drop 4".
Made in Scotland

2-3 week delivery from Scotland



DJ-K326 / AMZ-K326

DJ-K467 / AMZ-K467



DJ-K326

100% Lambswool
Single weight: lyndsay tartan.
Fringe drop 4".
74" L x 54.6" W.
Made in Scotland
2-3 week delivery from Scotland

AMZ-K326

100% Cashmere
Single weight: lyndsay tartan.
Fringe drop 4".
74" L x 54.6" W.
Made in Scotland
2-3 week delivery from Scotland



DJ-K326 / AMZ-K326



DJ-K352

100% Lambswool
Single weight: muted blue
dress stewart tartan
74" L x 54.6" W
Fringe drop 4".
Made in Scotland

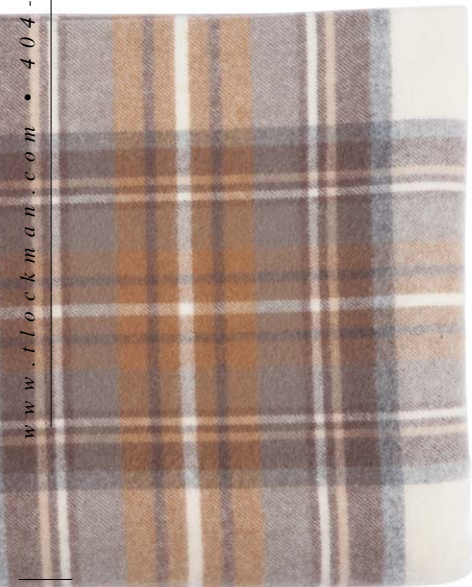
2-3 week delivery from Scotland

AMZ-K352

100% Cashmere
Single weight: muted blue
dress stewart tartan
74" L x 54.6" W
Fringe drop 4".
Made in Scotland

2-3 week delivery from Scotland

DJ-K352 / AMZ-K352



DJ-K538



DJ-K352 / AMZ-K352



DJ-K538

100% Lambswool
Single weight: natural
dress stewart tartan.

Fringe drop 4".
74" L x 54.6" W

Made in Scotland

2-3 week delivery from Scotland

www.tloekman.com • 404-748-1018

DJ-K309 / AMZ-K309



DJ-K303 / AMZ-K303



DJ-K309

100% Lambswool
Single weight: mackenzie tartan.
Fringe drop 4".
74" L x 54.6" W
Made in Scotland

AMZ-K309

100% Cashmere
Single weight: mackenzie tartan.
Fringe drop 4".
74" L x 54.6" W
Made in Scotland
2-3 week delivery from Scotland

DJ-K303

100% Lambswool
Single weight: royal
stewart tartan.
Fringe drop 4".
74" L x 54.6" W
Made in Scotland
2-3 week delivery from Scotland

AMZ-K303

100% Cashmere
Single weight: royal
stewart tartan
Fringe drop 4".
74" L x 54.6" W
Made in Scotland
12-14 week delivery from Scotland

DDW-X313
100% Lambswool
Double face: royal stewart,
hunting stewart tartan
Fringe drop 4".
74" L x 54.6" W
Made in Scotland



DDW-X313

DJ-K470



DJ-K470
100% Lambswool
Single weight: antique hunting
stewart tartan.
Fringe drop 4".
74" L x 54.6" W
Made in Scotland



DDW-X313

DDW-X313



DJ-K685

100% Lambswool
Single weight: camel
stewart tartan.
Fringe drop 4".
74" L x 54.6" W
Made in Scotland



DJ-K685

DJ-K312
100% Lambswool
Single weight: dress
gordon tartan.
Fringe drop 4".
74" L x 54.6" W
Made in Scotland

2-3 week delivery from Scotland



DJ-K312



DJ-R0463



DJ-K578



DJ-K317 / AMZ-K317

DJ-R0463

100% Lambswool
Single weight: maple tartan.
Fringe drop 4".
74" L x 54.6" W
Made in Scotland

4-8 week delivery from Scotland

DJ-K578

100% Lambswool
Single weight: grey
buchanan tartan.
Fringe drop 4".
74" L x 54.6" W
Made in Scotland

DJ-K317

100% Lambswool
Single weight: blackwatch
tartan.
Fringe drop 4".
74 x 54.6 in
Made in Scotland

4-8 week delivery from Scotland

AMZ-K317

100% Cashmere
Single weight: blackwatch
tartan.
Fringe drop 4".
74" L x 54.6" W
Made in Scotland

8-10 week delivery from Scotland

DJ-K472

100% Lambswool
Single weight: antique
buchanan tartan.
Fringe drop 4".
74" L x 54.6" W
Made in Scotland

AMZ-K472

100% Cashmere
Single weight: antique
buchanan tartan.
Fringe drop 4".
74" L x 54.6" W
Made in Scotland
2-3 week delivery from Scotland

DJ-Q833

100% Lambswool
Single weight: bicentennial
tartan.
Fringe drop 4".
size: 74" L x 54.6" W
Made in Scotland

DJ-K650

100% Lambswool
Single weight: holyrood tartan.
Fringe drop 4".
74" L x 54.6" W
Made in Scotland



DJ-K472 / AMZ-K472



DJ-Q833



DJ-K650

DJ-R1896
100% Lambswool
Single weight: orange
& ochre stripes.
Fringe drop 4".
74" L x 54.6" W
Made in Scotland





DJ-R1896

SOLD OUT

DDW-X414

100% Lambswool

Reversible tartan: Weathered

Hunting Stewart, Weathered

Royal Stewart®

Fringe drop 4".

74" L x 54,6" W

Made in Scotland

2-3 week delivery from Scotland



DDW-X0284

100% Lambswool

Reversible tartan: olive check,
olive, rust, plum tartan.

Fringe drop 4.

74" L x 54.6" W

Made in Scotland



DDW-X0285

100% Lambswool
Reversible tartan: green tweed
grid; orange, green, cream
gunclub.
Fringe drop 4".
74" L x 54.6" W
Made in Scotland

DDW-X0144

100% Lambswool
Reversible tartan: Olive Tweed
Grid, Olive Gunclub.
Fringe drop 4".
74" L x 54.6" W
Made in Scotland
2-3 week delivery from Scotland

DDW-X0034

100% Lambswool
Reversible tartan: Camel Tweed,
Camel Gunclub.
Fringe drop 4".
74" L x 54.6" W
Made in Scotland



DDW-X0285



DDW-X0285



DDW-X0144



DDW-X0034



DDW-X0144



DDW-X0034



DDW-X0035

100% Lambswool
Reversible tartan: Green
Heathered Tweed, Green
Gunclub.
Fringe drop 4".
74" L x 54.6" W
Made in Scotland
2-3 week delivery from Scotland

DDW-X0287

100% Lambswool
Reversible tartan: large check,
windowpane in green & red.
Fringe drop 4".
74" L x 54.6" W
Made in Scotland
2-3 week delivery from Scotland





DTW-R2337

100% Lambswool

Traditional plaid of oatmeal
base, olive & grey blue check
overlay.

Fringe drop 4".

74" L x 54.6" W

Made in Scotland

DDW-X0286

100% Lambswool

Reversible tartan: houndstooth,
block check in grey & burgundy

Fringe drop 4".

74" L x 54.6" W

Made in Scotland

2-3 week delivery from Scotland





DDW-X0036



DDW-X317



DDW-X0036



DDW-X317



DDW-X0033



DDW-X0033

DDW-X0036

100% Lambswool
Reversible tartan: Red Tweed,
Green Tweed.
Fringe drop 4".
74" L x 54.6" W
Made in Scotland

DDW-X317

100% Lambswool
Reversible tartan: Grey Stewart
Tartan
Fringe drop 4".
74" L x 54.6" W
Made in Scotland

DDW-X0033

100% Lambswool
Reversible tartan: Heathered
Stewart Tartan.
Fringe drop 4".
74" L x 54.6" W
Made in Scotland



AMZ-R2302

AMZ-R2302

100% Cashmere
Reinterpreted Classic: Antiqued
Cream Tartan.
Fringe drop 4".
74" L x 54.6" W
Made in Scotland

AMZ-R2299

100% Cashmere
Reinterpreted Classic: Rust
Tartan.
Fringe drop 4".
74" L x 54.6" W
Made in Scotland

AMZ-R2301

100% Cashmere
Reinterpreted Classic: Olive
Tartan.
Fringe drop 4".
74" L x 54.6" W
Made in Scotland



AMZ-R2999



AMZ-R2301



APZ-R2247

APZ-R2251

APZ-R2248

SOLD OUT



APZ-R2247

APZ-R2247

100% Cashmere
Classic Estate Tweed: Natural
& Rust.

Fringe drop 4".
62.4" L x 58.5" W

Made in Scotland

APZ-R2251

100% Cashmere
Classic Estate Tweed: Natural
& Olive.

Fringe drop 4".
62.4" L x 58.5" W

Made in Scotland

APZ-R2248

100% Cashmere
Classic Estate Tweed: Natural
& Cream.

Fringe drop 4".
62.4" L x 58.5" W

Made in Scotland



APZ-R2251



APZ-R2248

Nina Campbell for Johnstons is a high-quality, high-design line of throws created by the London-based interior designer, herself. The colors and patterns coordinate with Campbell's popular lines of fabrics and wallpapers and come in a variety of gorgeous combinations. This line is exclusive in the U.S. to T. Lockman LLC.





T. LOCKMAN LLC
Classic
Nina Campbell
for Johnstons
- Scotland -

DGU-X0183

100% Lambswool

Nina Campbell for Johnstons
reversible tartan: cream &
red welsch tartan, moss green
windowpane.

Fringe drop 4".

74" L x 58.5" W

Made in Scotland



DGU-X0185
100% Lambswool
Nina Campbell for Johnstons
reversible tartan: cream &
lavender welsch tartan, lemon
windowpane
Fringe drop 4".
74" L x 58.5" W.
Made in Scotland



DVT-V3316



DVP-V3324



DVT-V3316

100% Lambswool
Nina Campbell for Johnstons
Teal, Olive & White Twill Plaid
Fringe drop 4".
86.6" L x 59" W
Made in Scotland
2-3 week delivery from Scotland

DVP-V3324

100% Lambswool
Nina Campbell for Johnstons
Olive & White Twill Herringbone
Fringe drop 4".
86.6" L x 59" W
Made in Scotland
2-3 week delivery from Scotland

YHI-X0003

100% Lambswool
Nina Campbell for Johnstons
Solid reverse size: brown
buffalo check & brown
Blanket stitched.
74" L x 58.5" W
Made in Scotland



YHI-X0003



DGW-Y1749
100% Lambswool
Nina Campbell for Johnstons
aqua ragtime stripes.
Fringe drop 4".
74" L x 58.5" W
Made in Scotland



DHA-Y1746

100% Lambswool
Nina Campbell for Johnstons
aqua ching stripes.
Fringe drop 4" .
74" L x 58.5" W
Made in Scotland



DGW-Y1747



DGW-Y1747

100% Lambswool

Nina Campbell for Johnstons

Jaquard double weight:

lavender ragtime.

74" L x 58.5" W

Fringe drop 4".

Made in Scotland

DGW-Y1747







DHA-Y1745

DGW-Y1748



DHA-Y1745



DHA-Y1745

100% Lambswool
Nina Campbell for Johnstons
cranberry ching stripes.
74" L x 58.5" W
Fringe drop 4".
Made in Scotland



DGW-Y1748

100% Lambswool
Nina Campbell for Johnstons
Jaquard double weight:
cranberry ragtime
74" x 58.5"
Fringe drop 4".
Made in Scotland



DUR-Y9391

100% Lambswool

Nina Campbell for Johnstons:

Chain stitch in vintage red, brown & mustard on camel, extra long.

Fringe drop 4".

86.6" L x 59" W

Made in Scotland

DUU-Y9425

100% Lambswool

Nina Campbell for Johnstons:

Red & camel floral trellis, extra long.

Fringe drop 4".

86.6" L x 59" W

Made in Scotland



DGU-X0019

100% Lambswool

Nina Campbell for Johnstons

Reversible tartan: cranberry & butter

tartan, cranberry windowpane

Fringe drop 4".

74" L x 58.5" W

Made in Scotland



DGW-Y5212

DGW-Y5212



DGW-Y5212

100% Lambswool
Nina Campbell for Johnstons
jaquard reversible: navy & french
blue damask.
Fringe drop 4".
74" L x 58.5" W
Made in Scotland



DGW-Y5209

100% Lambswool
Nina Campbell for Johnstons
jaquard reversible: moss green
& cream damask.
Fringe drop 4".
74" L x 58.5" W
Made in Scotland



DGW-Y5211

100% Lambswool
Nina Campbell for Johnstons
jaquard reversible: taupe &
cream damask.
Fringe drop 4".
74" L x 58.5" W
Made in Scotland



DGW-Y5213

100% Lambswool
Nina Campbell for Johnstons
jaquard reversible: grey & white
damask.
Fringe drop 4".
74" L x 58.5" W
Made in Scotland



DNM-Y3663

100% Lambswool
Nina Campbell for Johnstons
Jacquard double weight: taupe
& french blue chequers.
Fringe drop 4".
74" L x 58.5" W
Made in Scotland

DNM-Y3666

100% Lambswool
Nina Campbell for Johnstons
Jacquard double weight: grey &
charcoal chequers.
Fringe drop 4".
74" L x 58.5" W
Made in Scotland

DNM-Y3664

100% Lambswool
Nina Campbell for Johnstons
Jacquard double weight: lemon
& sage chequers
Fringe drop 4".
74" L x 58.5" W
Made in Scotland

DNM-Y3665

100% Lambswool
Nina Campbell for Johnstons
Jacquard double weight: rose
& taupe chequers.
Fringe drop 4".
74" L x 58.5" W
Made in Scotland

DNM-Y3663

DNM-Y3663



DNM-Y3666



DNM-Y3665



DNM-Y3664



DHA-Y3658

100% Lambswool

Nina Campbell for Johnstons

Pale blue & white gingham.

Fringe drop 4".

74" L x 58.8" W

Made in Scotland

www.tloccleland.com - 404748-1018





DGW-Y1739



DHA-Y1739

100% Lambswool
Nina Campbell for Johnstons
Lavender gingham
Fringe drop 4"
74" L x 58.5" W
Made in Scotland



DHA-Y0199
100% Lambswool
Nina Campbell for Johnston
Pink pinstripes.
Fringe drop 4".
74" L x 58.5" W
Made in Scotland



DHA-Y0203
100% Lambswool
Nina Campbell for Johnstons
Grey pinstripes.
Fringe drop 4".
74" L x 58.5" W
Made in Scotland



DHA-Y0202
100% Lambswool
Nina Campbell for Johnstons
camel pinstripes
Fringe drop 4".
size: 74 x 58.5 in
Made in Scotland



DGW-Y7021

100% Lambswool
Nina Campbell for Johnstons
Jaquard double weight: lemon &
cream deauville wave.
Fringe drop 4".
74" L x 58.5" W
Made in Scotland



DGW-Y7024

100% Lambswool
Nina Campbell for Johnstons
Jaquard double weight: taupe &
cream deauville wave.
Fringe drop 4".
74" L x 58.5" W
Made in Scotland



DHA-Y3674

DJ-H0528
SEE PAGE 273

DHA-Y3672

DHA-Y3672

100% Lambswool
Nina Campbell for Johnstons
beige & buff indoe stripes.
Fringe drop 4".
74" L x 58.5" W
Made in Scotland



DHA-Y3673



DHA-Y3674

100% Lambswool
Nina Campbell for Johnstons
lime & fuschia indoe stripes.
Fringe drop 4".
74" L x 58.5" W
Made in Scotland



DHA-Y3674

DHA-Y3673

100% Lambswool
Nina Campbell for Johnstons
rose & blue indoe stripes.
Fringe drop 4".
74" L x 58.5" W
Made in Scotland

DHA-Y3675

Nina Campbell for Johnstons
grey & red indoe stripes.
100% Lambswool
Fringe drop 4".
74" L x 58.5" W
Made in Scotland



DHA-Y3675

DHA-Y5214

100% Lambswool
Nina Campbell for Johnstons
moss green bridge check.
Fringe drop 4".
74" L x 58.5" W
Made in Scotland

DHA-Y5215

100% Lambswool
Nina Campbell for Johnstons
taupe & pink bridge check.
Fringe drop 4".
74" L x 58.5" W
Made in Scotland



DHA-Y5214



DHA-Y5215



DHA-Y5217

DHA-Y5217
100% Lambswool
Nina Campbell for Johnstons
Grey bridge check.
Fringe drop 4".
74" L x 58.5" W
Made in Scotland



DHA-Y5216

DHA-Y5216
100% Lambswool
Nina Campbell for Johnstons
Navy bridge check.
Fringe drop 4".
74" L x 58.5" W
Made in Scotland

DHA-Y5225

100% Lambswool
Nina Campbell for Johnstons
Navy ribbon check.
Fringe drop 4".
74" L x 58.5" W
Made in Scotland

DHA-Y5224

100% Lambswool
Nina Campbell for Johnstons
Pink ribbon check.
Fringe drop 4".
74" L x 58.5" W
Made in Scotland

DHA-Y5226

100% Lambswool
Nina Campbell for Johnstons
Grey ribbon check.
Fringe drop 4".
74" L x 58.5" W
Made in Scotland



DHA-Y5225



DHA-Y5224



DHA-Y5226

DQA-Y5218



DQA-Y5221



DQA-Y5222

DQA-Y5219

DQA-Y5218

100% Lambswool
Nina Campbell for Johnstons
Reversible graphic weave: moss
green & taupe harlequin
Fringe drop 4".
74" L x 58.5" W
Made in Scotland

DQA-Y5221

100% Lambswool
Nina Campbell for Johnstons
Reversible graphic weave: navy
& french blue harlequin
Fringe drop 4".
74" L x 58.5" W
Made in Scotland

DQA-Y5222

100% Lambswool
Nina Campbell for Johnstons
Reversible graphic weave: grey
& black harlequin
Fringe drop 4".
74" L x 58.5" W
Made in Scotland

DQA-Y5219

100% Lambswool
Nina Campbell for Johnstons
Reversible graphic weave: pink
& white harlequin
Fringe drop 4".
74" L x 58.5" W
Made in Scotland



DQA-Y5221



DHA-Y3669

DHA-Y3669

100% Lambswool
Nina Campbell for Johnstons
Rose & white annesbrook
stripes, blue accent.
Fringe drop 4".
74" L x 58.5" W
Made in Scotland

DHA-Y3668

100% Lambswool
Nina Campbell for Johnstons
Lemon-lime & white annesbrook
stripes, pink accent.
Fringe drop 4".
74" L x 58.5" W
Made in Scotland



DHA-Y3668

The Contemporary Collection is a twist on the standard throw. They are colorful accents combining tactile comfort with energetic patterns. The hues in this group are playful, lively, and vibrant. Many are of a more whimsical nature; however the collection includes a number of sophisticated pieces, as well.





T. LOCKMAN^{LLC}
contemporary
- Scotland -

DFW-X0143

100% Lambswool

Reversible tartan: pink & green
tartan, chocolate grid.

Fringe drop 4".

74" L x 54.6" W

Made in Scotland







DCE-R0207

100% Lambswool

Jaquard double weight; plum
patchwork.

Fringe drop 4".

74" L x 54.6" W

Made in Scotland

DJ-R0177
100% Lambswool
Plum & charcoal block grid.
Fringe drop 4".
74" L x 54.6" W
Made in Scotland





DFW-X0038

DKS-R0767
SEE PAGE 308

DFW-X0038



DFW-X0038

100% Lambswool
Double face: candy tartan,
candy stripes.
74" L x 54.6" W
Fringe drop 4".
Made in Scotland

YEB-X0038

100% Lambswool
Double blanket stitched:
candy tartan, candy stripes.
72" L x 52.6" W
Made in Scotland



YEB-X0038

DCE-R0802



DCE-R0802



DCE-R0802

DCF-R1019

DCE-R0802

100% Lambswool
Jaquard double weight: aqua
& pink toile.
Fringe drop 4".
74" L x 54.6" W
Made in Scotland

DCF-R1019

100% Lambswool
Double weight: electric blue
& pink multi-squares
74" L x 54.6" W
Fringe drop 4".
Made in Scotland





DJ-R0171

100% Lambswool

Single weight: teal block grid.

Fringe drop 4"

74" L x 54.6" W

Made in Scotland

DJ-R0663

100% Lambswool
Single weight: aqua tartan.
Fringe drop 4".
74" L x 54.6" W
Made in Scotland

DJ-R0663



JB-R1409

100% Lambswool
Single weight: pale blue solid,
dark blue edging.
Blanket stitched.
72" L x 52.6" W
Made in Scotland



JB-R1409

DFW-R0216
100% Lambswool
Reversible tartan: blue
& stone plaid.
Fringe drop 4".
74" L x 54.6" W
Made in Scotland





DCF-R0216



DCE-R0884
100% Lambswool
Jaquard: reversible rainbow
circles, brights.
Fringe drop 4".
74" L x 54.6" W
Made in Scotland



DCE-R0884



DJ-R1475



DJ-R1477



DJ-R1475

100% Lambswool
Single weight: purple ombre
check.
Fringe drop 4".
74" L x 54.6" W
Made in Scotland

DJ-R1477

100% Lambswool
Single weight: purple ombre
stripes.
Fringe drop 4".
74" L x 54.6" W
Made in Scotland

DJ-R1476

100% Lambswool
Single weight: large plum check
Fringe drop 4".
74" L x 54.6" W
Made in Scotland



DJ-R1475



DJ-R1476



DJ-R0665

DJ-R0665
100% Lambswool
Single weight: rainbow
windowpane check.
Fringe drop 4"
74" L x 54.6" W
Made in Scotland



DJ-R0665

DJ-R0664
100% Lambswool
Single weight: candy
warp stripes.
Fringe drop 4".
74" L x 54.6" W
Made in Scotland



DJ-R0664



DFW-X0039



DFW-X0039

100% Lambswool
Double face: rainbow tartan,
rainbow stripes.
Fringe drop 4".
74" L x 54.6" W
Made in Scotland

YEB-X0039

100% Lambswool
Double face: rainbow tartan,
rainbow stripes.
Blanket stitched.
72" L x 52.6" W
Made in Scotland



YEB-X0039

DJ-R0666



DJ-R0666

100% Lambswool
single weight: rainbow plaid
Fringe drop 4".
74" L x 54.6" W
Made in Scotland

DKM-R0647

100% Lambswool
Reversible jaquard: rainbow
buttons.
Fringe drop 4".
74" L x 54.6" W
Made in Scotland



DKM-R0647



DKM-R0647



DCE-R0873

100% Lambswool

Reversible jacquard: "Feel At Home" in red.

Fringe drop 4".

74" L x 54.6" W

Made in Scotland





DJ-RJ122

DJ-H0528

DJ-R1122

100% Lambswool
Single weight: pink & orange
tweed check.
Fringe drop 4".
74" L x 54.6" W
Made in Scotland

DJ-H0528

100% Lambswool
Single weight: heathered candy
pink.
Fringe drop 4".
74" L x 54.6" W
Made in Scotland





DCE-R1154

DCE-R1154

100% Lambswool
Reversible jacquard: green chicks
Fringe drop 4".
74" L x 54.6" W
Made in Scotland



DCE-R1154



DBS-R0904

100% Lambswool
Double weight: green weft
panel stripes
Fringe drop 4".
74" L x 54.6" W
Made in Scotland



DJ-H0201

100% Lambswool

Single weight: heathered sage

Fringe drop 4".

74" L x 54.6" W

Made in Scotland



DCE-R1154

www.tloekman.com • 404-748-1018

DCE-R1157



DCE-R1157

100% Lambswool
Reversible jaquard: green
pansy color blocks
Fringe drop 4".
74" x 54.6"
Made in Scotland



DJ-R1125



DJ-R1126



DJ-R1127



DJ-R1125

100% Lambswool
Single weight: green & yellow
picnic plaid.
Fringe drop 4".
74" L x 54.6" W
Made in Scotland

DJ-R1126

100% Lambswool
Single weight: green & white
picnic gunclub.
Fringe drop 4".
74" L x 54.6" W
Made in Scotland

DJ-R1127

100% Lambswool
Single weight: green picnic
block check.
Fringe drop 4".
74" L x 54.6" W
Made in Scotland

DJ-R1127



DCF-R1022

100% Lambswool
Reversible jaquard: peacock
multi squares
Fringe drop 4".
74" L x 54.6" W
Made in Scotland



DCF-R1022

DCF-R1021

100% Lambswool
Reversible jaquard: blue &
white multi squares.
Fringe drop 4".
74" L x 54.6" W
Made in Scotland



DCF-R1021





DJ-R1468

DJ-R1469



DJ-R1468

100% Lambswool
Single weight: blue & white tweed
Fringe drop 4".
74" L x 54.6" W
Made in Scotland



DJ-R1467

100% Lambswool
Single weight: blue warp
stripes on white
Fringe drop 4".
74" L x 54.6" W
Made in Scotland



DJ-R1469

100% Lambswool
Single weight: blue
grid on white
Fringe drop 4".
74" L x 54.6" W
Made in Scotland

DFW-R0214

100% Lambswool

Double face: brown & rust
sunset tartan, pink & black grid

Fringe drop 4".

74" L x 54.6" W

Made in Scotland





DJ-R1894
100% Lambswool
Single weight: mustard ombre check.
Fringe drop 4".
74" L x 54.6" W
Made in Scotland



DJ-R0676
100% Lambswool
Single weight: chocolate weft stripes
Fringe drop 4".
74" L x 54.6" W
Made in Scotland

This collection encompasses what we call the “sense of home.” The sophisticated color palette of soft tones and neutral hues complements the light patterns in this line giving the throws a pleasantly familiar feel.



T. LOCKMAN LLC
Cottage
- Scotland -

www.tlockman.com • 404-748-1018



DJ-R0677

100% Lambswool
Single weight: camel open grid.
Fringe drop 4".
74" L x 54.6" W
Made in Scotland



DJ-R1883

100% Lambswool
Single weight: large grid in
yellow & cream.
Fringe drop 4".
74" L x 54.6" W
Made in Scotland



DJ-R1897

100% Lambswool
Single weight: orange & ochre
grid on tan.
Fringe drop 4".
74" L x 54.6" W
Made in Scotland



DJ-R1897



DTS-R2311
***SEE PAGE 308**

DJ-R1897

**BQA-R2874**

100% extra fine merino
silver & white herringbone
Fringe drop 2".
size: 74 x 54.6 in
Made in Scotland

BQA-R2875

100% extra fine merino
Salmon & white herringbone
size: 74 x 54.6 in
Fringe drop 2"
Made in Scotland

BQA-R3012

100% extra fine merino
Sage & white herringbone
Fringe drop 2"
74" x 54.6"
Made in Scotland

BQA-R2872

100% extra fine merino
Otter & white herringbone
Fringe drop 2".
74" L x 54.6" W
Made in Scotland

2-3 week delivery from Scotland

BQA-R2875



BQA-R2874



BQA-R3012



BQA-R2872

DJ-R0659



DJ-R0659

100% Lambswool
Single weight; rose block check.
Fringe drop 4".
74" L x 54.6" W
Made in Scotland

DCE-V400

100% Lambswool
Double face; salmon & white
plaid, blush & white plaid.
Fringe drop 4".
74" L x 54.6" W
Made in Scotland

DCE-R0872

100% Lambswool
Jaquard: "Feel At Home"
in blush & white.
Fringe drop 4".
74" L x 54.6" W
Made in Scotland

DCE-R0871

100% Lambswool
Jaquard: "Feel At Home"
in tan & blush.
Fringe drop 4".
74" L x 54.6" W
Made in Scotland



DCE-V400



404-748-1018

www.tloockman.com

DCE-R0872



DCE-R0871



DKM-R0645



DKM-R0645

100% Lambswool
Reversible jaquard: pastel
buttons.

Fringe drop 4".
74" L x 54.6" W
Made in Scotland



DJ-R1892

100% Lambswool
single weight: country check on
natural.

Fringe drop 4".
74" L x 54.6" W
Made in Scotland



DCE-R1495
100% Lambswool
Jaquard: fairisle patchwork in
pastels.
Fringe drop 4".
74" x 54.6"
Made in Scotland



DCE-R1495



DJ-R1119

DCE-R1156

100% Lambswool
Jaquard: beige & sea foam
pansy color blocks.
74" L x 54.6" W
Fringe drop 4".
Made in Scotland

DJ-R1119

100% Lambswool
Single weight: sea foam & tan
ombre check
Fringe drop 4".
74" L x 54.6" W
Made in Scotland



DCE-R1156



DJ-R0672

100% Lambswool
Single weight: peacock warp
stripes.
Fringe drop 4".
74" L x 54.6" W
Made in Scotland

DJ-R0674

100% Lambswool
Single weight: peacock block
check.
74" L x 54.6" W
Made in Scotland

DJ-R0674





YEB-X0041

YEB-X0041

100% Lambswool
Double face: peacock plaid,
peacock stripes.
Blanket stitched.
72" L x 52.6" W
Made in Scotland

DJ-R0673

100% Lambswool
Single weight: peacock tartan
Fringe drop 4".
74" L x 54.6" W
Made in Scotland

DJ-R0673





DCF-R1488

100% Lambswool

Reversible jaquard: blue & white
interchanging gingham & block
checks.

Fringe drop 4".

74" L x 54.6" W

Made in Scotland

DCF-R1488

YEB-X0075



YEB-X0075

100% Lambswool

Double face: heathered sky blue
solid, heathered navy solid.

Blanket stitched.

72" L x 52.6" W

Made in Scotland



DCE-R1858
100% Lambswool
Reversible jacquard: duck
eggs in blue & cream
Fringe drop 4".
74" L x 54.6" W
Made in Scotland





DJ-R1484
100% Lambswool
Reversible jacquard: yellow
pastels block check.
Fringe drop 4".
74" L x 54.6" W
Made in Scotland





DJ-R1123



DJ-R1123

DJ-R1123

100% Lambswool
Single weight: pink & orange
windowpane.
Fringe drop 4".
74" L x 54.6" W
Made in Scotland

DJ-R1124

100% Lambswool
Single weight: pink & orange
block check.
Fringe drop 4".
74" L x 54.6" W
Made in Scotland



DJ-R1124

AMP-R1512

100% Cashmere
Double face: heathered berry
solid, pink grid on rose.
Fringe drop 4".
74" L x 54.6" W
Made in Scotland

AMP-R1512





DJ-R0111

100% Lambswool

Single weight: pale pink & white stripes.

Fringe drop 4".

70" L x 54.6" W

Made in Scotland

DCE-R0872

100% Lambswool

Jaquard: "Feel At Home" in
blush & white.

Fringe drop 4".

74" L x 54.6" W

Made in Scotland



With a weave dating back to the crofting communities of Scotland, this line of throws offers not only a clean and beautiful aesthetic, but a glimpse into the history of the art of weaving. The throws in this collection are simple, on cream grounds, with tightly constructed and distinctive weaves that reflect the culture of Scotland's cottage industry.





T. LOCKMAN LLC
Crofting
Collection
- Scotland -



DTT-R2329

DTT-R2329
100% Lambswool
Single weight: lovat
& pink ticking stripes.
Fringe drop 4".
74" L x 54.6" W
Made in Scotland

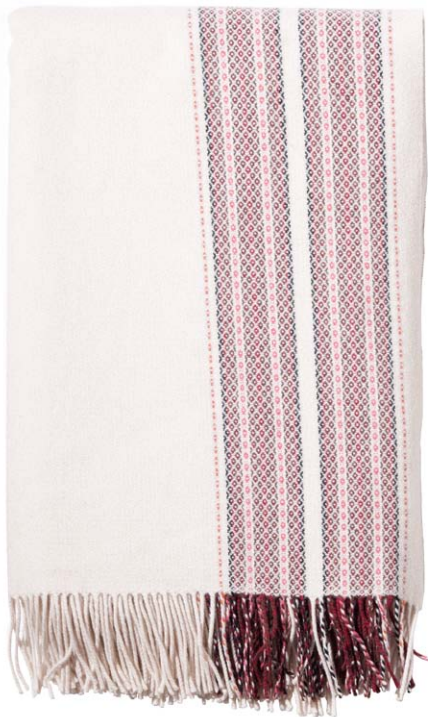


DTT-R2321

DTT-R2321
100% Lambswool
Single weight: flannel
stripes, red on cream.
Fringe drop 4".
74" L x 54.6" W
Made in Scotland
2-3 week delivery from Scotland

DTT-R2319

100% Lambswool
Single weight: hugs &
kisses border panel, red.
Fringe drop 4".
74" L x 54.6" W
Made in Scotland



DTT-R2319

DTT-R2334

100% Lambswool
Single weight: flannel
stripes, blue on cream
Fringe drop 4".
74" L x 54.6" W
Made in Scotland
2-3 week delivery from Scotland



DTT-R2329



DTT-R2331
100% Lambswool
Single weight: hugs & kisses
trim in blue green.
74" L x 54.6" W
Fringe drop 4".
Made in Scotland



DTT-R2333
100% Lambswool
Single weight: hugs & kisses
border panel, pale tones.
74" L x 54.6" W
Fringe drop 4".
Made in Scotland



DTT-R2326

100% Lambswool

Single weight: hugs & kisses
border panel, candy pink.

Fringe drop 4".

74" L x 54.6" W

Made in Scotland



DTT-R2324

100% Lambswool

Single weight: hugs & kisses
trim, red on cream.

Fringe drop 4".

74" L x 54.6" W

Made in Scotland

DTT-R2325

100% Lambswool
Single weight: all over
kisses, red.
Fringe drop 4".
74" L x 54.6" W
Made in Scotland



DTT-R2328

100% Lambswool
Single weight: all over
checks, red on cream.
Fringe drop 4".
74" L x 54.6" W
Made in Scotland



DTT-R2328

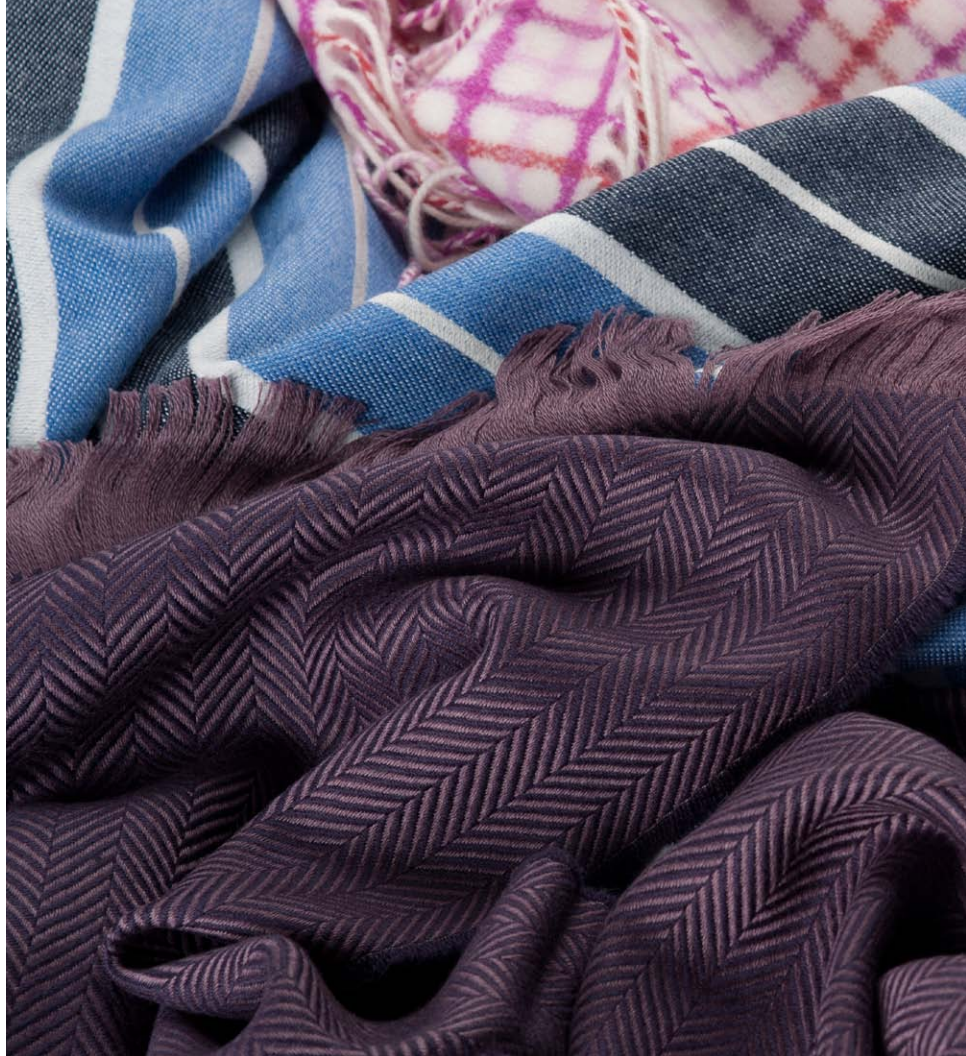
DTT-R2335

100% Lambswool
Single weight: all over
checks, natural on cream.
Fringe drop 4".
74" L x 54.6" W
Made in Scotland



DTT-R2335

The Modern Collection brings forth new weaves and color combinations. Historic plaids are reinterpreted and presented in new hues, and alternative fibers are brought into play, like extra fine merino. It is a collection of innovation and creativity, blended with the comfort and utility of a traditional throw.





T. LOCKMAN LTD
Modern
- Scotland -

BQA-R3014

www.tloockman.com • 404-748-1018



BQA-R3015

BQA-R3014

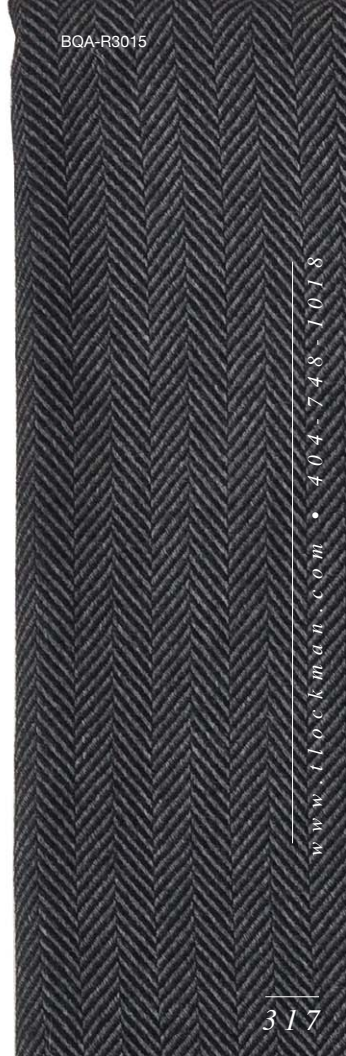
100% Extra Fine Merino
Raisin & plum herringbone.
Fringe drop 2".
74" L x 54.6" W
Made in Scotland



BQA-R3014

BQA-R3015

100% Extra Fine Merino
Charcoal & grey herringbone.
Fringe drop 2".
74" L x 54.6" W
Made in Scotland





AEV-R2254



AEV-R2252



AEV-R2254



AEV-R2252



AEV-R2256



AEV-R2256

AEV-R2254

100% Cashmere
Double face: dark grey, charcoal.
Fringe drop 4".
74" L x 54.6" W
Made in Scotland

AEV-R2252

100% Cashmere
Double face: white, cream.
Fringe drop 4".
74" L x 54.6" W
Made in Scotland

AEV-R2256

100% Cashmere
Double face: wine, burgundy.
Fringe drop 4".
74" L x 54.6" W
Made in Scotland

AEV-R2255

100% Cashmere

Double face: dark brown, olive.

Fringe drop 4".

74" L x 54.6" W

Made in Scotland



AEV-R2253

100% Cashmere

Double face: otter solid /
cream solid.

Fringe drop 4".

74" L x 54.6" W

Made in Scotland

2-3 weeks from Scotland





AMZ-R2258



AMZ-R2261

AMZ-R2257

100% Cashmere

Single weight: grey tipped
chocolate.

Fringe drop 4".

74" L x 54.6" W

Made in Scotland

AMZ-R2261

100% Cashmere

Otter with beige
tipped edge.

Fringe drop 4".

74" L x 54.6" W

Made in Scotland

AMZ-R2258

100% Cashmere

Silver solid with pink
tipped edge.

Fringe drop 4".

74" L x 54.6" W

Made in Scotland



AMZ-R2257



DTS-R2312



DTS-R2312

100% Lambswool
 Ladder weave: charcoal & grey.
 Fringe drop 4".
 74" L x 54.6" W
Made in Scotland

DTS-R2308

100% Lambswool
 Ladder weave: silver & white.
 Fringe drop 4".
 74" L x 54.6" W
Made in Scotland

DTS-R2313



DTS-R2313

100% Lambswool
 Ladder weave: burgundy & wine.
 Fringe drop 4".
 74" L x 54.6" W
Made in Scotland



DTS-R2311

100% Lambswool
 Ladder weave: brown & vicuna.
 Fringe drop 4".
 74" L x 54.6" W
Made in Scotland

See page 269



DTS-R2308

DTS-R2311



DKS-R0767

100% Lambswool

Reversible jaquard: blue & white
grid, blue & white circles.

Fringe drop 4".

74" L x 54.6" W

Made in Scotland





DKS-R0768

100% Lambswool

Reversible jacquard: pink & white
grid, pink & white circles.

Fringe drop 4".

74" L x 54.6" W

Made in Scotland

BNQ-B1058

90% Merino, 10% Cashmere
Single weight: buttermilk waffle
weave.

Fringe drop 4".

74" L x 54.6" W

Made in Scotland



BNQ-B1058



BNQ-B0277

90% Merino, 10% Cashmere
Single weight: camel waffle
weave.

Fringe drop 4".
74" L x 54.6" W

Made in Scotland

BNQ-B0277



BNQ-A0200
SEE PAGE 332

BNQ-E2009

BNQ-B0277
SEE PAGE 329

BNQ-E2009
90% Merino, 10% Cashmere
Single weight: English rose
waffle weave
Fringe drop 4".
74" L x 54.6" W
Made in Scotland



BNQ-E2009



BNQ-A0200



BNQ-A0900

BNQ-A0200

90% Merino, 10% Cashmere
Single weight: light grey waffle
weave.
Fringe drop 4".
74" L x 54.6" W
Made in Scotland

BNQ-A0900

90% Merino, 10% Cashmere
Single weight: black waffle
weave.
Fringe drop 4".
74" L x 54.6" W
Made in Scotland
4-8 week delivery from Scotland

BNQ-A0700

90% Merino, 10% Cashmere
Single weight: charcoal grey
waffle weave.
Fringe drop 4".
74" L x 54.6" W
Made in Scotland



BNQ-A0700



BNQ-A0200



BRQ-R3032

BRQ-R3032

100% Extra Fine Merino
Reversible jacquard: alternating
warp stripes in dark brown
& cream.
Fringe drop 2".
74" L x 54.6" W
Made in Scotland

BRQ-R3021

100% Extra Fine Merino
Reversible jacquard: warp
stripes, navy & white
Fringe drop 2".
74" L x 54.6" W
Made in Scotland



BRQ-R3021



BRQ-R3017



BRQ-R3018



BRQ-R3017



BRQ-R3019



BRQ-R3018



BRQ-R3019

BRQ-R3018

100% Extra Fine Merino
Reversible jacquard: navy
& white large panelled stripes.
Fringe drop 2".
74" L x 54.6" W
Made in Scotland

BRQ-R3017

100% Extra Fine Merino
Reversible jacquard: navy bordered
stripes, mid blue & white thin stripes.
Fringe drop 2".
74" L x 54.6" W
Made in Scotland

BRQ-R3019

100% Extra Fine Merino
Reversible jacquard: alternating
warp stripes in navy, bright blue
& white.
Fringe drop 2".
74" L x 54.6" W
Made in Scotland

Interesting weaves, funky colorations, this collection is always popular. We have a variety of patterns and styles intermixed together. This group is predominantly all reversible patterns, making them more versatile. These speak to a range to customers, and add a lot of punch.





T. LOCKMAN LLC
Patchwork
& Collage
- Scotland -



DPW-R1493



DPW-R1493
100% Lambswool
Purple & green mixture.
Fringe drop 4".
74" L x 54.6" W
Made in Scotland



DPW-R1493





DCE-R0781

100% Lambswool
Reversible jaquard: patchwork,
teak & orange tones.
Fringe drop 4".
74" L x 54.6" W
Made in Scotland





DCE-R0779

DCE-R0779
100% Lambswool
Reversible jaquard: patchwork,
peacock tones.
Fringe drop 4".
74" L x 54.6" W
Made in Scotland



DKM-R0646
100% Lambswool
Reversible jaquard: teak
buttons.
Fringe drop 4".
74" L x 54,6" W
Made in Scotland

DKM-R0646



DCE-R0779



DCE-R1496



DCE-R1496
100% Lambswool
Reversible jaquard: fairisle
patchwork, blues.
Fringe drop 4".
74" L x 54.6" W
Made in Scotland



DCE-R1155



DCE-R1155

DCE-R1155

100% Lambswool
Reversible jaquard: pink &
orange pansy color blocks.
Fringe drop 4".
74" L x 54.6" W
Made in Scotland





DCE-R1497

DCE-R1497
100% Lambswool
Fairisle patchwork, browns.
Fringe drop 4".
74" L x 54.6" W
Made in Scotland



This line of nautically inspired throws is an instant American classic. The blanket-stitched edge is an American contribution to the world of throws and blankets, originating in Connecticut in the 1800's with the invention of the crochet machine. This particular collection has an extra plump weave for added softness and warmth.





T. LOCKMAN LLC
American
Yacht
- Scotland -



YCO-R3509

100% Lambswool

Double weight: cabin comfort,

red & white stripes on navy.

Blanket stitched.

72" L x 52.6" W

Made in Scotland

2-3 week delivery from Scotland





YCO-R3506

100% Lambswool

Double weight: cabin comfort,
red navy ochre stripes on cream.

Blanket stitched.

72" L x 52.6" W

Made in Scotland

2-3 week delivery from Scotland



YCO-R3507

100% Lambswool

Double weight: cabin comfort,
cream stripes on orange.

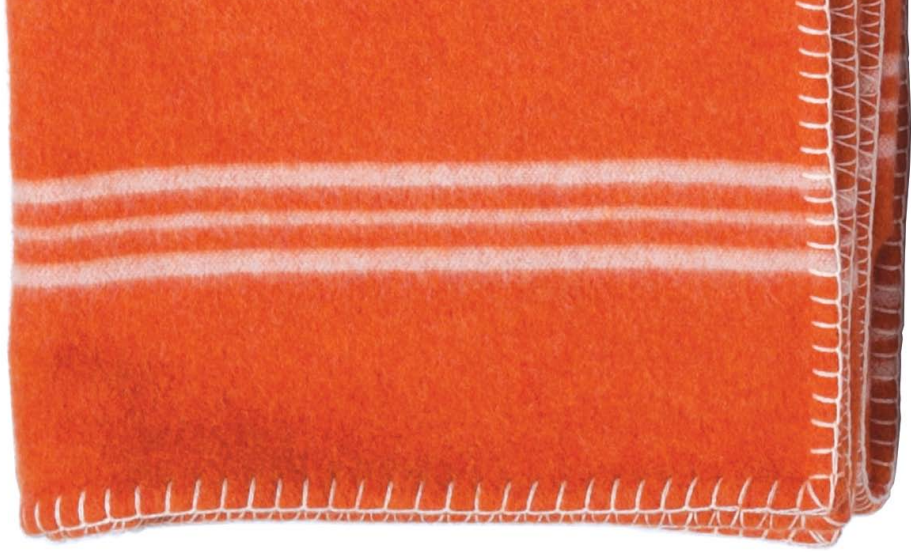
Blanket stitched.

72" L x 52.6" W

Made in Scotland

2-3 week delivery from Scotland





YCO-R4088

100% Lambswool
Double weight: vintage red
& oatmeal, travel stamp.
Blanket stitched.

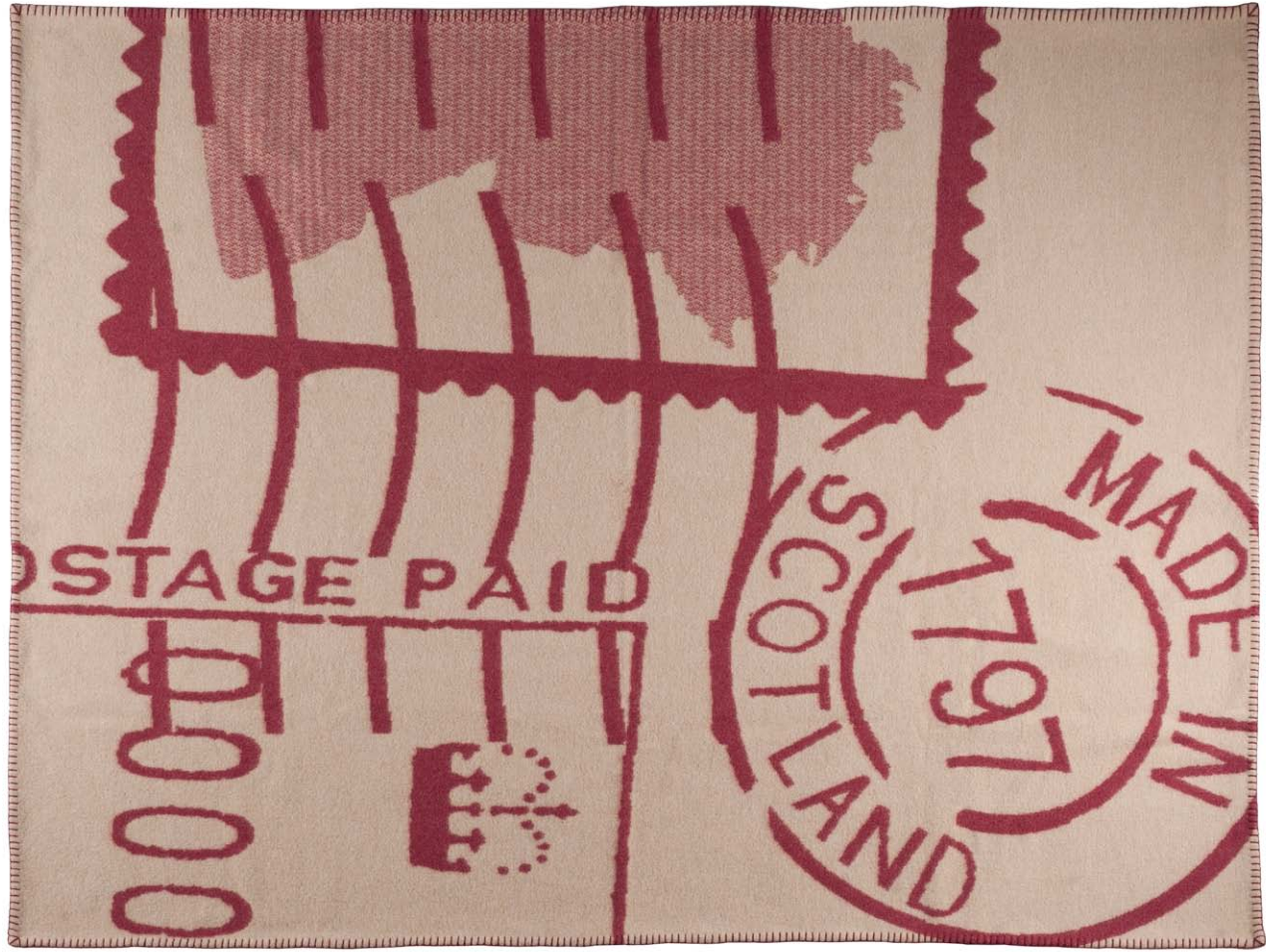
72" L x 52.6" W

Made in Scotland

2-3 week delivery from Scotland

www.tloockman.com • 404-748-1018





The Baby Collection is a group of youthful throws for children of all ages. The line includes satin-trimmed cashmeres for newborns, knitted blankets for infants, colorful lambswools for strollers, and a group of playful patterns perfect for children's rooms. The blankets come in a variety of sizes and blends.





T. LOCKMAN LTD
Baby
& Infant
Blankets
- Scotland -



BBCi-R1911
100% Cashmere.
Lilac & Pink Duck.
Satin Ribbon Trim edge.
40" L x 24" W
Made in Scotland



BBCi-R1909
100% Cashmere.
Aqua & Blue Duck.
Satin Ribbon Trim edge.
40" L x 24" W
Made in Scotland



BBCI-R2314



BBCI-R2315

BBCi-R2314
100% Cashmere.
Pale Blue Storks & Hearts.
Satin Ribbon Trim edge
40" L x 24" W
Made in Scotland

BBCi-R2315
100% Cashmere.
Pale Pink Storks & Hearts.
Satin Ribbon Trim edge
40" L x 24" W
Made in Scotland

BBCi-R2316
100% Cashmere.
Camel Storks & Hearts.
Satin Ribbon Trim edge.
40" L x 24" W
Made in Scotland



BBCi-R2316



BBCKSM-HE105

BBCKSM-HE105

Hand Knitted. 90% Merino,
10% Cashmere.
Pale Pink.
44" L x 35" W
Made in Scotland

BBCKSM-HA000

Hand Knitted. 90% Merino,
10% Cashmere.
Creamy White.
44" L x 35" W
Made in Scotland

BBMKS-HA000

Hand Knitted. 90% Merino,
10% Cashmere.
Creamy White.
44" L x 35" W
Made in Scotland



BCKSM-HA000



BBMKS-HA000



BBSM R1915 /
BBLG R1915

BBSM-R1913 /
BBLG-R1913

BBSM-R1912 /
BBLG-R1912

BBSM-R1914 /
BBLG-R1914

BBSM-R1913

Small - 100% Lambswool.
Pink Dots on Pink.
Blanket Stitched.
35" L x 24" W
Made in Scotland

BBLG R1913

Large - 100% Lambswool.
Pink Dots on Pink.
Blanket Stitched.
48" L x 35" W
Made in Scotland

BBSM R1915

Small - 100% Lambswool.
Blue Dots on Blue.
Blanket Stitched.
35" L x 24" W
Made in Scotland

BBLG R1915

Large - 100% Lambswool.
Blue Dots on Blue.
Blanket Stitched.
48" L x 35" W
Made in Scotland

BBSM-R1916 /
BBLG-R1916

BBSM-R1917 /
BBLG-R1917

BBSM-R2287 /
BBLG-R2287



BBSM-R1913 / BBLG-R1913



BBCKSM-HA000 / BBLG-R1915



BBSM-R1914

Small - 100% Lambswool.
Blue Beach Stripes.
Blanket Stitched.
35" L x 24" W
Made in Scotland

BBLG-R1914

Large - 100% Lambswool.
Blue Beach Stripes.
Blanket Stitched.
48" L x 35" W
Made in Scotland

BBSM-R1912

Small - 100% Lambswool.
Pink Beach Stripes.
Blanket Stitched.
35" L x 24" W
Made in Scotland

BBLG-R1912

Large - 100% Lambswool.
Pink Beach Stripes.
Blanket Stitched.
48" L x 35" W
Made in Scotland





BBSM-R1917 / BBLG-R1917



BBSM-R2287 / BBLG-R2287

BBSM R1917

Small - 100% Lambswool.
Pink & Lilac Check.
Blanket Stitched.
35" L x 24" W
Made in Scotland

BBLG R1917

Large - 100% Lambswool.
Pink & Lilac Check.
Blanket Stitched.
48" L x 35" W
Made in Scotland

BBSM R2287

Small - 100% Lambswool.
Camel & Tan Check.
Blanket Stitched.
35" L x 24" W
Made in Scotland

BBLG R2287

Large - 100% Lambswool.
Camel & Tan Check.
Blanket Stitched.
48" L x 35" W
Made in Scotland

BBSM R1916

Small - 100% Lambswool.
Blue & Aqua Check.
Blanket Stitched.
35" L x 24" W
Made in Scotland

BBLG R1916

Large - 100% Lambswool.
Blue & Aqua Check.
Blanket Stitched.
48" L x 35" W
Made in Scotland



BBSM-R1916 / BBLG-R1916



BBCKSM-HA000 / BBCLG-A000



BBCKSM-HA000 / BBCLG-H108



BBCKSM-HA000 / BBCLG-E108

BBCSM-A000

Waffle Solid, Small - 90%
Merino, 10% Cashmere.
White Waffle.
Blanket Stitched.
35" L x 24" W
Made in Scotland

BBCLG-A000

Waffle Solid, Small - 90%
Merino, 10% Cashmere.
White Waffle.
Blanket Stitched.
48" L x 35" W
Made in Scotland

BBCSM-H108

Waffle Solid, Small - 90%
Merino, 10% Cashmere.
Pale Blue Waffle.
Blanket Stitched.
35" L x 24" W
Made in Scotland

BBCLG-H108

Waffle Solid, Small - 90%
Merino, 10% Cashmere.
Pale Blue Waffle.
Blanket Stitched.
48" L x 35" W
Made in Scotland

BBCSM-E108

Waffle Solid, Small - 90%
Merino, 10% Cashmere.
Pale Pink Waffle.
Blanket Stitched.
35" L x 24" W
Made in Scotland

BBCLG-E108

Waffle Solid, Small - 90%
Merino, 10% Cashmere.
Pale Pink Waffle.
Blanket Stitched.
48" L x 35" W
Made in Scotland



BBCLG-R2861



BBCLG-R2863

BBCLG-R2861

Waffle Solid, Large - 90%
Merino, 10% Cashmere.
White Waffle with Blue Trim.
Blue Blanket Stitching.
48" L x 35" W
Made in Scotland

BBCLG-R2863

Waffle Solid, Large - 90%
Merino, 10% Cashmere.
White Waffle with Pink Trim.
Pink Blanket Stitching.
48" L x 35" W
Made in Scotland

BBCLG-R2862


Waffle Solid, Large - 90%
Merino, 10% Cashmere.
White Waffle with Tan Trim.
Tan Blanket Stitching.
48" L x 35" W
Made in Scotland



BBCLG-R2862

This line of neutral-toned throws is called the Peru Collection. Made for us in Peru of 100% baby alpaca, these throws are extremely soft and strikingly handsome. Whether you choose the herringbone, plain, or folded edge, each of the three weave styles offers a different, equally charming accent to any room.





T. LOCKMAN LLC
Peruvian
throws
- Peru -

ALP-MAT-025-TT

100% Baby Alpaca

Reversible: tan and taupe.

Folded edge.

70" W x 50" L

Made in Peru

8-12 week delivery from Peru



ALP-MAT-025-CG
100% Baby Alpaca
Reversible: charcoal and gray
Folded edge.
70" W x 50" L
Made in Peru



ALP-MAT-025-ST

100% Baby Alpaca

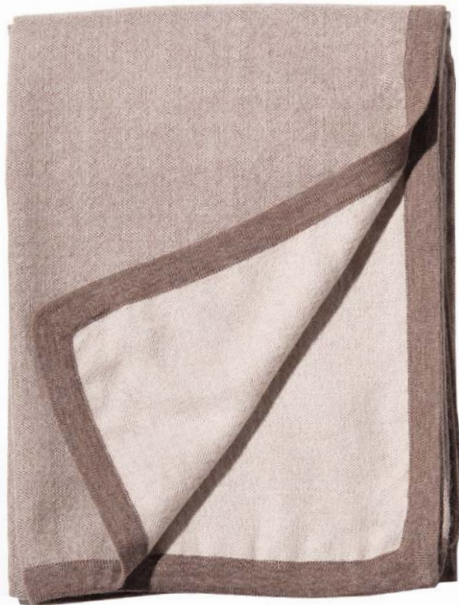
Reversible: sand and tan.

folded edge.

70" L x 50" W

Made in Peru

2-4 week delivery from Peru





ALP-MAT-025-CW
100% Baby Alpaca
Reversible: caramel and
pale wheat.
Folded edge.
70" L x 50" W
Made in Peru



ALP-MAT-0188-CA

ALP-MAT-0188-GR

100% Baby Alpaca
Herringbone: gray and charcoal.
Fringe drop 4".
70" L x 50" W
Made in Peru

8-12 week delivery from Peru

ALP-MAT-0188-CB

100% Baby Alpaca
Herringbone: chocolate and brown.
Fringe drop 4".
70" L x 50" W
Made in Peru

8-12 week delivery from Peru

ALP-MAT-0188-CA

100% Baby Alpaca
Herringbone: camel and tan.
Fringe drop 4".
70" L x 50" W
Made in Peru

8-12 week delivery from Peru



ALP-MAT-0188-GR



ALP-MAT-0188-CB



ALP-MAT-0188-CA



ALP-MAT-001-LG

ALP-MAT-001-LG

100% Baby Alpaca
Plain weave: light gray.
Fringe drop 4".
70" L x 50" W
Made in Peru

8-12 week delivery from Peru

ALP-MAT-001-WH

100% Baby Alpaca
Plain weave: white
Fringe drop 4".
70" L x 50" W
Made in Peru

8-12 week delivery from Peru



ALP-MAT-001-WH

ALP-MAT-001-CA

100% Baby Alpaca

Plain weave: camel.

Fringe drop 4".

70" L x 50" W

Made in Peru

8-12 week delivery from Peru

ALP-MAT-001-HB

100% Baby Alpaca

Plain weave: heathered brown.

Fringe drop 4".

70" L x 50" W

Made in Peru

8-12 week delivery from Peru

ALP-MAT-001-DG

100% Baby Alpaca

Plain weave: dark gray.

Fringe drop 4".

70" L x 50" W

Made in Peru

8-12 week delivery from Peru



ALP-MAT-001-CA



ALP-MAT-001-HB



ALP-MAT-001-DG

T. LOCKMAN LLC Throws Definition of Terms

Blanket stitch:

A functional decorative stitch used on the edges of an unhemmed fabric to prevent the ends from fraying.

Buffalo check:

Large check pattern of alternating squares (see also check, gingham).

Cashmere:

Made from the hair of the Kashmir goat; exceptionally soft and luxurious.

Check:

A plain weave with stripes intersecting at right angles to form squares.

Crofting throws:

Designs reflecting the heritage of Great Britain's farms and countryside.

Gingham:

Small check pattern; traditionally using white and one other color.

Herringbone:

Zigzag pattern resembling chevrons or the bones of a herring.

Lambswool:

Made from the fleece of a sheep less than a year old.

Merino:

Type of sheep prized for its very fine, soft fleece.

Nina Campbell:

An internationally acclaimed interior designer.

Outdoors quality:

Thicker and coarser than other weaves, designed for outdoor use.

Plaid:

A plain weave with patterns of intersecting stripes.

Plain Weave:

Most basic method of fabric weaving, characterized by its checkerboard appearance.

Reversible or Double-faced:

Different pattern/color on either side; two cloths are woven simultaneously but separately.

Tartan:

Plaid design originating in Scotland from the 3rd century AD.

Twill:

Characterized by its diagonal weave.

Virgin Wool:

Wool with no previous use; wool that has never been processed into fabric.

90/10:

Made using a blend of 90% Extra Fine Merino and 10% Cashmere.

T. LOCKMAN LLC Throw Care Instructions

For Baby Blankets:

DRY CLEAN ONLY.

Keep away from moths and insects.

Emergency Hand Wash Instructions:

DO NOT USE A WASHING MACHINE.

First, try to blot clean the soiled area using a luke-warm, damp cloth and a mild soap. Cashmere soap or one of the industry's similar non-petroleum based soaps is strongly recommended. Remove as much of the soiling as possible, then promptly take to dry cleaners.

Emergency Drying Instructions:

Dry only on a flat surface.

NEVER TUMBLE, DRIP, OR HANG DRY.

Gently wring out excess water, and then lay the blanket out in its full size on a flat surface. Once they have been wetted, blankets must be reworked into their original shape. When dry, take to dry cleaners

For Throws:

DRY CLEAN ONLY.

Keep away from moths and insects.

The throw's fibers contain natural oils which help then not to absorb moisture immediately. So, if a small spill does occur, it can be cleaned by hand. For more serious spills, clean off excess spillage and take promptly to the dry cleaners.

Simple Spills:

DO NOT USE A WASHING MACHINE.

First, try to blot clean the soiled area using a luke-warm, damp cloth and a mild soap. Cashmere soap or one of the industry's similar non-petroleum based, mild detergents designed for fine fabrics is strongly recommended.

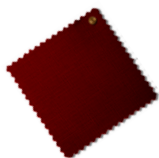
Emergency Drying Instructions:

Dry only on a flat surface.

NEVER TUMBLE, DRIP, OR HANG DRY.

Gently wring out excess water, and then lay the throw out in its full size on a flat surface. Once they have been wetted, throws must be reworked into their original shape. When dry, take to dry cleaners.

T. LOCKMAN LLC Throws Color Index



BURGUNDY
191, 212, 308, 312, 319,
325, 359



NAVY BLUE
182, 194, 197, 198, 231,
241, 244, 335, 336, 352



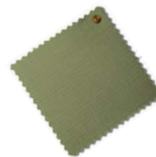
GREEN
274, 275, 276, 277, 278,
296, 344



RED
189, 190, 194, 202, 211,
227, 228, 268, 269, 270



BLUE
182, 199, 222, 257, 260,
279, 281, 298, 326, 336,
346, 369, 371



OLIVE
189, 195, 205, 205, 206,
210, 212, 215



PINK
184, 224, 233, 236, 239,
240, 243, 244, 246, 250,
255, 256, 264, 272, 273,
288, 303, 305, 308, 327,
331, 347, 362, 364, 366,
369, 371, 372, 375



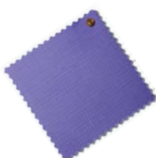
LIGHT BLUE
182, 193, 234, 236, 255,
298, 300, 357, 364, 373,
374



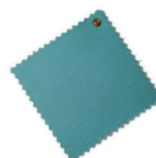
LIME
236, 239, 247, 277



ORANGE
204, 356



PURPLE
224, 235, 252, 262, 264,
316, 340, 397



TEAL
79, 80, 82, 83, 131, 148,
158

www.tlockman.com • 404-748-1018



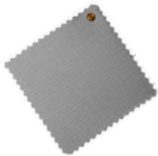
BLACK
177, 198, 211, 244, 332



DARK BROWN
181, 320, 323, 325,
334, 385



YELLOW
219



GREY
176, 198, 209, 231, 233,
239, 241, 243, 244, 316,
318, 325, 381, 384, 389



BROWN
181, 200, 205, 215, 250,
283, 342, 345, 349, 382,
385, 389



CREAM
192, 212, 218, 220, 231,
236, 243, 246, 266, 290,
292, 295, 308, 310, 318,
328, 355, 362, 376



LIGHT GREY
176, 289, 322, 325,
332, 386



TAUPE
231, 233, 236, 240, 243,
244, 260, 289, 291, 294,
380



WHITE
178, 211, 318, 367,
374, 376, 387, 396



TAN
178, 179, 180, 192, 196,
208, 215, 221, 236, 239,
286, 291, 292, 313, 321,
322, 329, 345, 365, 372,
383, 388

T. LOCKMAN LLC

BOOK FOUR:

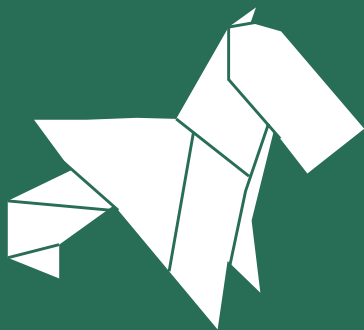
Gifts

Cashmere Comfort Sets 396
Origanimals™ 398

BOOK FOUR

T. LOCKMAN LLC

Gifts



www.tlockman.com • 404-748-1018

Cashmere Comfort Set
100% Cashmere
Hot Water Bottle and Cashmere
Cover with matching socks.
8" W x 13" H
One size fits all socks.
Made in Scotland



WHITE



LAVENDER

Originals® are numbered, limited-edition, sculptural design pieces. Handmade in the USA with 100% recycled scottish lambswool. Available animals are dog, giraffe, rhino, and elephant. Colors and patterns vary based on the recycled wool's availability. Styles consist of a strong accent pattern and secondary pattern/color. Exact patterns cannot be selected, however, look can be guided by selecting a specific design style. To order follow the customization steps below.

**STEP 1 -
CHOOSE AN ANIMAL:**

DOG	GIRAFFE
ELEPHANT	RHINO

**STEP 2 -
CHOOSE A DESIGN
STYLE:**

Design style can be chosen from the following four themes:

Traditional
(Design based around Classic Tartan patterns; excellent in traditional rooms with muted tones.)

Modern
(Patterns combine to create an edgy, modern home feel. Ideal as a pop art style sculptural piece.)

Bright
(Vibrant and eye catching; Ideal for saturated color schemes & children's rooms.)

Pastel
(Subdued patterns in pastel tones; ideal for rooms with light & airy color schemes.)



ELEPHANT, PASTEL*

GIRAFFE, MODERN*

RHINO, TRADITIONAL*

nimals®

ORIGINALS®

100% Recycled Lambswool
imported from Scotland.
Handmade in Limited Numbered Editions.

Colors & Styles vary.

Dog, 6" W x 19" D x 14" H

Elephant, 8.25" W x 19" D x 12" H

Giraffe, 6" W x 16" D x 17" H

Rhino, 5.5" W x 19" D x 9.5" H

(Sizes will vary slightly)

Made in USA



ELEPHANT, BRIGHT*

DOG, TRADITIONAL*

ELEPHANT, MODERN*

* Patterns used are just an example of the available styles. Actual colors & patterns will vary based on recycled wools availability.

C o n t a c t

RETAIL ORDER CONTACT INFORMATION:

404-748-1031

FAX: 866-406-7416

WHOLESALE & FOR-THE-TRADE

CONTACT INFORMATION:

404-748-1018

FAX: 866-406-7416

Hours of operation:

Monday through Friday.

9am -5pm EST.

OFFICE & WAREHOUSE ADDRESS:

1854 Marietta Blvd., NW

Atlanta, GA 30318

C a t a l o g D e s i g n

The Benjamin Harrison Blake Company
An Advertising Agency

1854 Marrietta Blvd
Atlanta, GA 30318

404-549-9789
www.bhbhlakecompany.com

P r o d u c t i o n C r e d i t s

PHOTOGRAPHY:
Benjamin Harrison Blake
Photography
www.bhblakephoto.com

FASHION STYLING:
Tian Justman
www.tianjustman.com

HAIR & MAKE UP:
MaraZ
www.M-A-R-A-Z.com

FASHION MODELS:

Madison Olson	June Wind
Lindsay Malphrus	Ana Bradfield
Rachel Doebler	Nicole Sapienza
Hannah Kasulka	Madeleine Goodhand
Hannah Johnson	Jordan Stephens
Jenni Lubozynski	Stephany Jakoby
Natalie Koho	Tyler Calkins
Ketch Willis	Holly Simpson
Tian Justman	



T. LOCKMAN LLC

High Design Products for Home & Life